

**Inverter Driven Heat Pump**

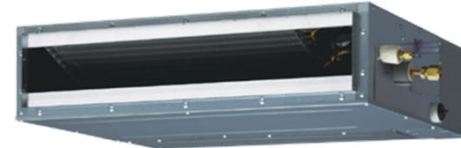
**18,000 BTU Slim Duct Type**

Job Name \_\_\_\_\_  
 Location \_\_\_\_\_  
 Engineer \_\_\_\_\_  
 Submitted To \_\_\_\_\_  
 Submitted By \_\_\_\_\_  
 Reference \_\_\_\_\_

Date \_\_\_\_\_  
 Approval \_\_\_\_\_  
 Construction \_\_\_\_\_  
 Unit No \_\_\_\_\_  
 Drawing No \_\_\_\_\_

**PRODUCT FEATURES**

- Wired remote controller
- Automatic airflow adjustment
- Auto/Cool/Dry/Fan/Heat/modes
- weekly timer
- Powerful mode
- Auto changeover
- Cold prevention



**MODEL NUMBERS**

Indoor Unit	ARU18RLF
Nominal Capacity	18,000

**LINESET REQUIREMENTS**

Connection Method	Flare	
Liquid	in (mm)	Ø1/4 (Ø6.35)
Gas		Ø1/2 (Ø12.70)
Drain hose	Material	Hard PVC
	in	Ø 3/4 (I.D.), Ø 1-1/16 (O.D.)
	mm	Ø 20.7 (I.D.), Ø 26.6 (O.D.)

**INDOOR DIMENSIONS & WEIGHT**

Net (H x W x D)	in	7-13/16 x 35-7/16 x 24-7/16
	mm	198 x 900 x 620
Gross (H x W x D)	in	10-13/16 x 45-1/16 x 30-3/8
	mm	274 x 1,145 x 772
Net Weight	lb (kg)	49 (22)
Gross Weight		60 (27)

**ELECTRICAL SPECIFICATIONS**

Voltage/Frequency/Phase	208/230 V ~ 60 Hz	
Voltage Range	187–264 V	
Running Current	A	0.44
Input Power	W	73

**SOUND PRESSURE**

Indoor Unit	Cooling	High	dB (A)	32
		Medium		31
		Low		30
		Quiet		29
	Heating	High	dB (A)	33
		Medium		32
		Low		31
		Quiet		29

**FAN DATA**

Airflow Rate	Cooling	High	CFM (m3/h)	554 (940)
		Medium		518 (880)
		Low		483 (820)
		Quiet		441 (750)
	Heating	High	CFM (m3/h)	554 (940)
		Medium		518 (880)
		Low		483 (820)
		Quiet		441 (750)
Static Pressure	inWG (Pa)	0 to 0.36 (0 to 90)		

**Warranty Information**



7 Year Compressor, 5 Year Parts out-of-the-box Warranty



10 Year Compressor, 10 Year Parts Warranty when registered within 30 days of installation in a residence



12 Year Compressor, 12 Year Parts Warranty when registered within 30 days of installation in a residence, and installed by a Fujitsu Elite contractor

**ENCLOSURE**

Enclosure	Material	Galvanized steel sheet
	Color	-

**ACCESSORIES**

UTY-TTRX	3rd Party Thermostat Converter
UTD-ECS5A	Slim Duct Connector Kit
UTY-LRHUM	Wireless Remote Receiver Kit
UTY-RVNUM	Wired Remote w/backlight
UTY-RSNUM	Simple Remote
UTY-XSZX	Remote Sensor
FJ-RC-WIFI-1NA	Intesis Wired WiFi module
FJ-IR-WIFI-1NA	Intesis IR WiFi module
UTY-TFNXZ2	WiFi interface Module
UTD-GXSB-W	Auto Louver Grill Kit



ETL#: 0

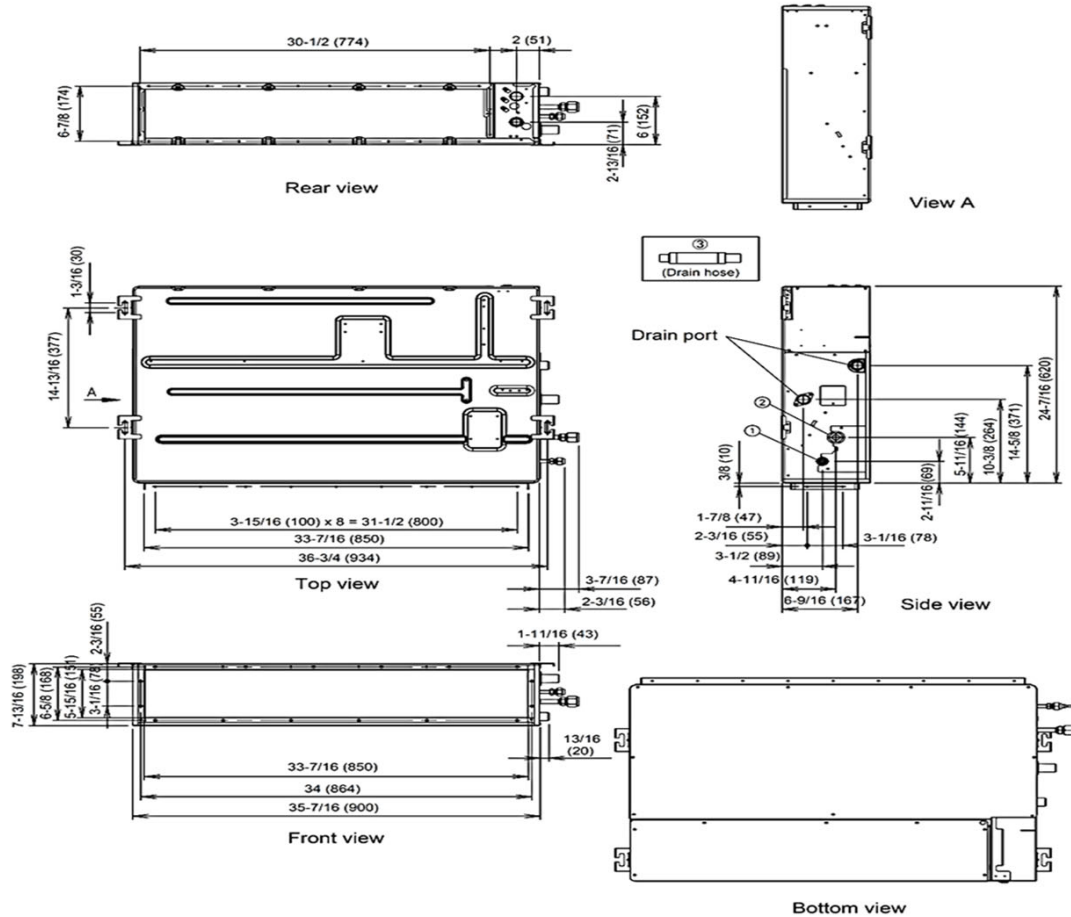
Effective Date: 2/11/2020

Version ARU18RLF -2019B

Due to continuous product improvements, specifications are subject to change without notice. Please log in to the Fujitsu Portal for the most up-to-date documentation <https://portal.fujitsugeneral.com>

DIMENSIONS

Units: In. (mm)



The Fujitsu logo is a worldwide trademark of Fujitsu General Limited. The Halcyon logo and name is a worldwide trademark of Fujitsu General Limited and is a registered trademark in Japan, the USA and other countries or areas. Copyright 2018 Fujitsu General America, Inc. Fujitsu's products are subject to continuous improvements. Fujitsu reserves the right to modify product design, specifications and information in this brochure without notice and without incurring any obligations.

Note: Specifications are based on the following conditions:  
 Cooling: Indoor temperature of 80°F (26.7°C) DB/67°F (19.4°C) WB, and outdoor temperature of 95°F (35°C) DB/75°F (23.9°C) WB. Heating: Indoor temperature of 70°F (21.1°C) DB/60°F (15.6°C) WB, and outdoor temperature of 47°F (8.3°C) DB/43°F (6.1°C) WB. Pipe length: 25ft. (7.5m), Height difference: 0ft. (0m) (Outdoor unit - indoor unit).