

**Inverter Driven Heat Pump**

**18,000 BTU Single Zone XLTH Wall Mounted System**

Job Name \_\_\_\_\_  
 Location \_\_\_\_\_  
 Engineer \_\_\_\_\_  
 Submitted To \_\_\_\_\_  
 Submitted By \_\_\_\_\_  
 Reference \_\_\_\_\_

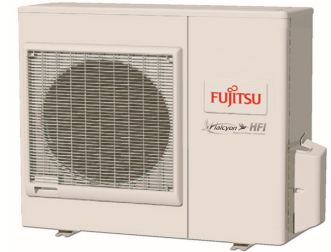
Date \_\_\_\_\_  
 Approval \_\_\_\_\_  
 Construction \_\_\_\_\_  
 Unit No \_\_\_\_\_  
 Drawing No \_\_\_\_\_

**PRODUCT FEATURES**

- Auto Changeover
- 24 hr. Timer
- Auto Louver: 4 way
- Minimum Heat Mode
- Wireless Remote control
- Auto Restart
- Economy Mode
- Base Pan Heater



Heating down to -15°F outdoor temperatures



**MODEL NUMBERS**

Indoor Unit	ASU18RLF
Outdoor Unit	AOU18RLXFWH
System	18RLXFWH

**EFFICIENCIES**

SEER	20.0	
EER	13.3	
HSPF	10.4	
COP	kW/kW	3.50
	Btu/hW	12.0

**OUTDOOR TEMPERATURE OPERATION RANGE**

Cooling	*F(*C)	-5 to 115 (-20 to 46)
Heating		-15 to 75 (-26 to 24)

**CAPACITIES**

Cooling	Rated	BTU/hW	18,000
	Min.-Max.		7000-23000
Heating	Rated		21,600
	Min.-Max.		7000-29000

**LINESET REQUIREMENTS**

Connection Method	Flare		
Liquid	in (mm)	Ø 3/8 (Ø 9.52)	
Gas		Ø 5/8 (Ø 15.88)	
Pre-Charge Length		66 (20)	
Minimum Length	ft (m)	16 (5)	
Maximum Length		164 (50)	
Max. Height Diff.		98 (30)	

**INDOOR DIMENSIONS & WEIGHT**

Net (H x W x D)	in	12-5/8 x 39-1/4 x 9
	mm	320 x 998 x 228
Gross (H x W x D)	in	12-3/5 x 42-15/16 x 16-7/8
	mm	319 x 1090 x 429
Net Weight	lb (kg)	31 (14)
Gross Weight		40 (18)

**OUTDOOR DIMENSIONS & WEIGHT**

Net (H x W x D)	in	32-11/16 x 35-7/16 x 13
	mm	830 x 900 x 330
Gross (H x W x D)	in	39-3/8 x 41-5/16 x 17-1/2
	mm	1,000 x 1,050 x 445
Net Weight	lb (kg)	135 (61)
Gross Weight		152 (69)

**Warranty Information**



7 Year Compressor, 5 Year Parts out-of-the-box Warranty



10 Year Compressor, 10 Year Parts Warranty when registered within 60 days of installation in a residence



12 Year Compressor, 12 Year Parts Warranty when registered within 60 days of installation in a residence, and installed by a Fujitsu Elite contractor

**ACCESSORIES**

UTY-TTRX	3rd Party Thermostat Converter
UTY-RNNUM	Wired Remote
UTY-RVNUM	Wired Remote w/backlight
UTY-RSNUM	Simple Remote
UTY-XWZX	Dry Contact Wire Kit
FJ-RC-WIFI-1NA	Intesis Wired WiFi Module
FJ-IR-WIFI-1NA	Intesis IR WiFi Module
UTY-TFNXZ2	WiFi Interface Module



This system combination is Energy Star qualified



Indoor Unit ETL#: 3170288  
 Outdoor Unit ETL#: 91987

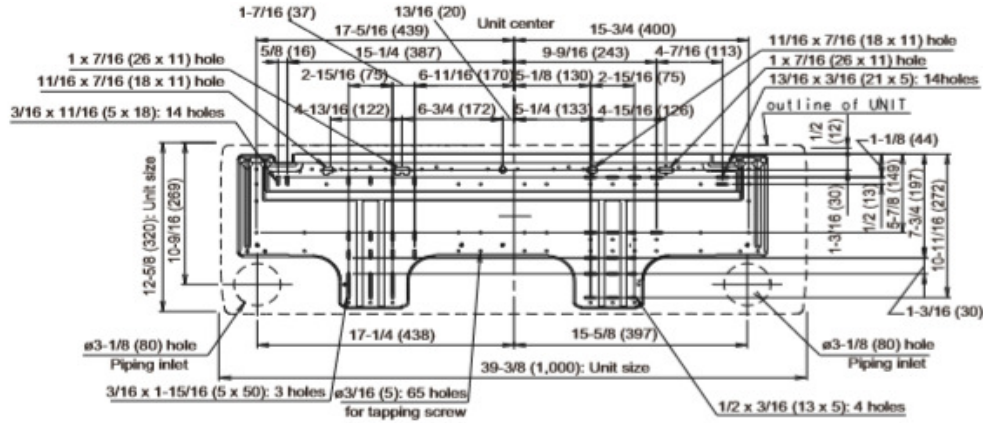
Due to continuous product improvements, specifications are subject to change without notice. Please log in to the Fujitsu Portal for the most up-to-date documentation <https://portal.fujitsugeneral.com>

**Inverter Driven Heat Pump** **18,000 BTU Single Zone XLTH Wall Mounted System**

FAN DATA			
Indoor Unit Airflow Rate	Cooling	High	541 (920)
		Medium	435 (740)
		Low	365 (620)
		Quiet	306 (520)
	Heating	High	541 (920)
		Medium	435 (740)
		Low	365 (620)
		Quiet	318 (540)
Outdoor Unit Airflow Rate	Cooling	1,489 (2,530)	
	Heating	1,489 (2,530)	
SOUND PRESSURE			
Indoor Unit	Cooling	High	43
		Medium	37
		Low	33
		Quiet	28
	Heating	High	44
		Medium	37
		Low	33
		Quiet	28
Outdoor Unit	Cooling	47	
	Heating	50	
REFRIGERANT			
Type	R410A		
Charge	lb oz	4 lb 10.1 oz	
	kg	2,100	
Oil Type	POE (RB68)		

ELECTRICAL SPECIFICATIONS			
Voltage/Frequency/Phase		208/230V~60HZ	
Voltage Range		187-253V~60HZ	
Current	Cooling	Rated	6.2
	Heating	Rated	8
Maximum Operating Current		Cooling	A 13.5
		Heating	14.5
Starting Current	7.8		
MCA	17		
Maximum Circuit Breaker	20		
Input Power	Cooling	Rated	1.35
		Min.-Max.	0.50-3.01
	Heating	Rated	1.8
		Min.-Max.	0.48-3.23
Power Factor	Cooling	%	95
	Heating		98
OTHER			
Moisture Removal	pints/h (L/h)		2.8(5.9)
Energy Star	YES		
Drain hose	Material	PVC	
Size	in (mm)	Ø 15/32 (Ø 12) (I.D.), Ø 5/8 (Ø 16) (O.D.)	
Operation Range	Cooling	°F (°C)	64 to 90 (18 to 32)
		%RH	80 or less
	Heating	°F (°C)	88 (30) or less

**Wall Bracket Data:**



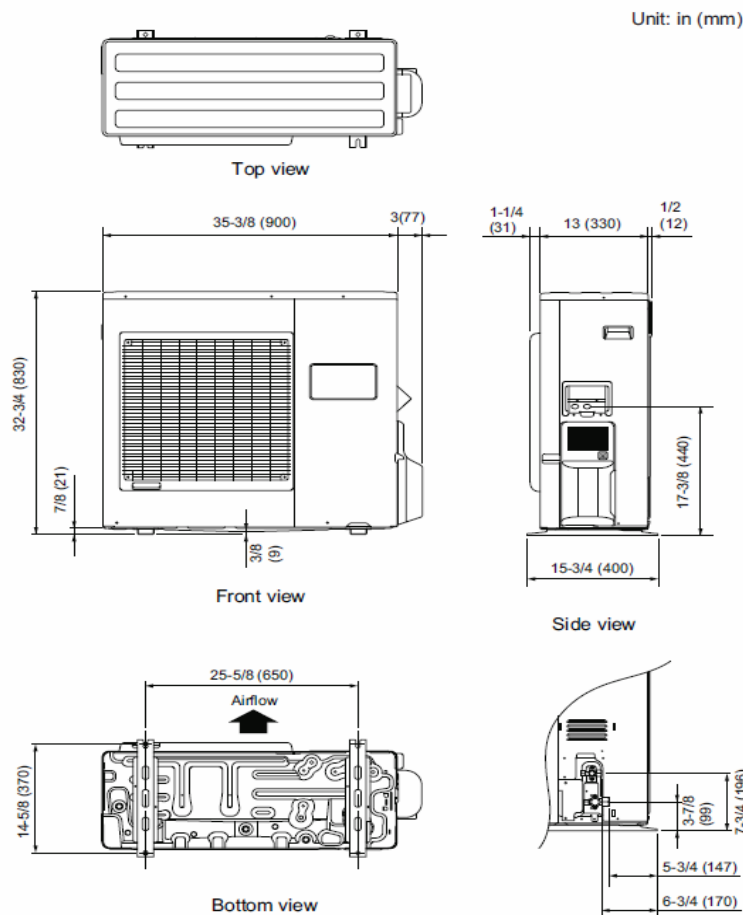
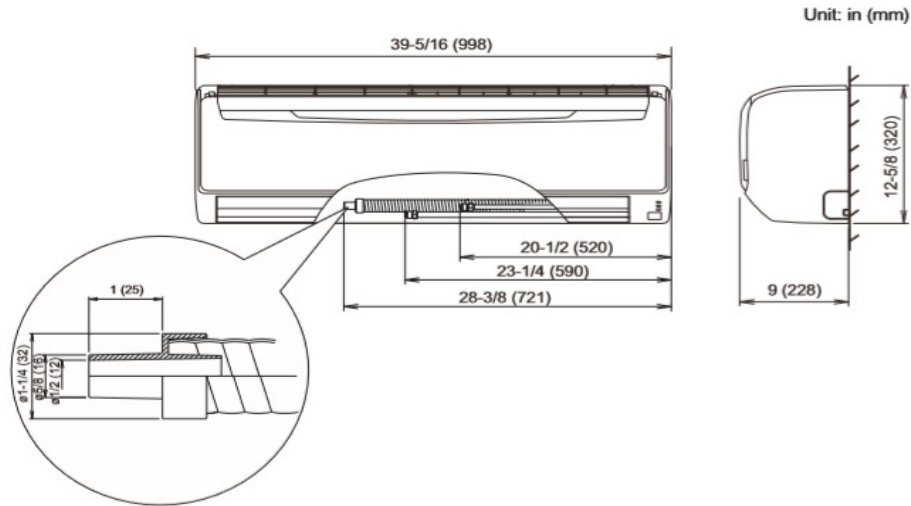
The Fujitsu logo is a worldwide trademark of Fujitsu General Limited. The Halcyon logo and name is a worldwide trademark of Fujitsu General Limited and is a registered trademark in Japan, the USA and other countries or areas. Copyright 2018 Fujitsu General America, Inc. Fujitsu's products are subject to continuous improvements. Fujitsu reserves the right to modify product design, specifications and information in this brochure without notice and without incurring any obligations.

Note: Specifications are based on the following conditions:  
 Cooling: Indoor temperature of 80°F (26.7°C) DB/67°F (19.4°C) WB, and outdoor temperature of 95°F (35°C) DB/75°F (23.9°C) WB. Heating: Indoor temperature of 70°F (21.1°C) DB/60°F (15.6°C) WB, and outdoor temperature of 47°F (8.3°C) DB/43°F (6.1°C) WB. Pipe length: 25ft. (7.5m), Height difference: 0ft. (0m) (Outdoor unit - indoor unit).

Inverter Driven Heat Pump 18,000 BTU Single Zone XLTH Wall Mounted System

DIMENSIONS

Units: In. (mm)



The Fujitsu logo is a worldwide trademark of Fujitsu General Limited. The Halcyon logo and name is a worldwide trademark of Fujitsu General Limited and is a registered trademark in Japan, the USA and other countries or areas. Copyright 2018 Fujitsu General America, Inc. Fujitsu's products are subject to continuous improvements. Fujitsu reserves the right to modify product design, specifications and information in this brochure without notice and without incurring any obligations.

Note: Specifications are based on the following conditions:  
 Cooling: Indoor temperature of 80°F (26.7°C) DB/67°F (19.4°C) WB, and outdoor temperature of 95°F (35°C) DB/75°F (23.9°C) WB. Heating: Indoor temperature of 70°F (21.1°C) DB/60°F (15.6°C) WB, and outdoor temperature of 47°F (8.3°C) DB/43°F (6.1°C) WB. Pipe length: 25ft. (7.5m), Height difference: 0ft. (0m) (Outdoor unit - indoor unit).