

Project

Name
Maple Grove Apartments

Location
Hopkinsville, KY

Completion Date
June 2014

The Team

HVAC Contractor
Climate Control Company

HVAC Distributor
Cayce Mill Supply

HVAC Manager
Max Webb HVAC

Fujitsu Equipment

(20) AOU18RLXFZ Outdoor Unit

(20) ASU7RLF Wall Mount

(20) ASU9RLF Wall Mount

(2) AOU36RLXFZ Outdoor Unit

(4) ASU18RLF Wall Mount



Can't beat energy savings!

Maple Grove Apartments originally served as a gym. Later the property was turned into a doctors office. Now it is a luxury 20 apartment complex in downtown Hopkinsville, KY. The apartments were gutted and 2 bedroom, 1 bath rooms were built with 10 on each floor.

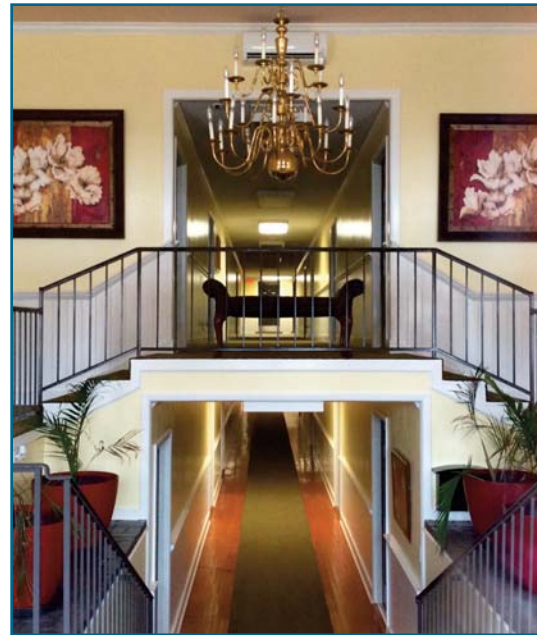
Design Challenge

When designing the apartments, Climate Control originally looked at using conventional duct work and unitary equipment. They decided to check out Fujitsu Mini-split equipment with the space that it would save, installation cost and energy savings.



Solution

Climate Control and the building owner did research online about Fujitsu equipment and what were the best options for the apartments.



Results

The building owner chose Fujitsu over conventional units because of the benefits of the installation without duct work. The energy savings and working with Cayce Mill Supply along with Climate Control were another added bonus.

Customer Testimonial

The building owner brags about how quiet the units are and the energy cost on each apartment. The total cost of energy on each apartment ranges from \$10 to \$37 a month. He is very happy with the units.

