

## Compact Cassette (12,000 BTU) Indoor Unit For Heat-pump Airstage VRF System

Job Name \_\_\_\_\_  
 Location \_\_\_\_\_  
 Engineer \_\_\_\_\_  
 Submitted To \_\_\_\_\_  
 Submitted By \_\_\_\_\_  
 Reference \_\_\_\_\_

Date \_\_\_\_\_  
 Approval \_\_\_\_\_  
 Construction \_\_\_\_\_  
 Unit No \_\_\_\_\_  
 Drawing No \_\_\_\_\_

### FEATURES

- Compact 2' x 2' size to match ceiling panels
- Quiet 3 speed fan
- Built-in high-lift drain pump
- Built-in IR Receiver
- Compatible with 2-wire remotes only
- Grille includes built-in modulating louvers
- Grille must be ordered separately (UTG-CCGV)
- 10 year Extended Warranty on parts and compressor. See Warranty Statement.



### PIPING ACCESSORIES

UTP-AX090A	Separation Tube - 2-Pipe - 90 MBH or Less
UTP-AX180A	Separation Tube - 2-Pipe - 91 to 180 MBH
UTP-AX567A	Separation Tube - 2-Pipe - 180 MBH or More

### CONTROLLER

UTY-RNKU	Wired Remote Control
UTY-RHKU	Simple Remote (WITHOUT Master Control) (1/16 units)
UTY-LNHU	Wireless Remote Controller (requires IR Receiver)

UTY-DCGY	Central Remote Controller (100 units)
UTY-DTGYZ1	Touch Panel Controller with Internet (400 units)

### ACCESSORIES

#N/A	#N/A
UTR-YDZB	Air Outlet Shutter Plate for Compact Cassette
UTZ-KXGC	Insulation Kit for High Humidity for Compact Cassette
0	#N/A
UTY-XSZX	Remote Sensor for ducted units

### WEIGHT AND DIMENSIONS

Enclosure - Net Weight - lbs [kg]	33 [15]
Enclosure - Gross Weight - lbs [kg]	42 [19]
Dimensions - Net (H x W x D) - in [mm]	9-5/8 x 22-7/16 x 22-7/16 [245 x 570 x 570]
Dimensions - Gross (H x W x D) - in [mm]	10-7/16 x 28-3/4 x 24-5/8 [265 x 730 x 625]
Grille Weight Net - lbs [kg]	6 [2.6]
Grille Weight Gross - lbs [kg]	10 [4.5]
Grille Dimensions Net (H x W x D) - in [mm]	1-15/16 x 27-9/16 x 27-9/16 [50 x 700 x 700]
Grille Dimensions Gross (H x W x D) - in [mm]	4-3/4 x 30-1/8 x 29-3/4 [120 x 765 x 755]

### CAPACITY

Capacity - Cooling - Btu/h [kW]	12,000 [3.5]
Capacity - Heating - Btu/h [kW]	13,500 [4.0]

### ELECTRICAL

Power Source	208 / 230V, 1-Phase, 60Hz
Available Voltage Range - VAC	187 to 253
Input Power - W	29
Max Circuit Breaker - A	20
Minimum Circuit Ampacity - MCA - A	0.27
Fuse - A (V)	3.15 (250)

### FAN

Fan Type	Turbo
Airflow Rate - High - CFM [m³/h]	353 [600]
Airflow Rate - Medium - CFM [m³/h]	312 [530]
Airflow Rate - Low - CFM [m³/h]	230 [390]

### SOUND PRESSURE

Sound Pressure Level - dB(A)	27/34/37
------------------------------	----------

### WIRING

Communication Cable	LonWorks (Fujitsu Pink Cable. See AE Bulletin 009)
---------------------	--

### PIPING

Connection Pipe Diameter - Liquid (Flare) - in [mm]	ø 1/4 [6.35]
Connection Pipe Diameter - Gas (Flare) - in [mm]	ø 1/2 [12.70]
Connection Pipe Diameter - Drain (ID; OD) - in [mm]	ø 3/4 [19.05]
Drain-Pump	Built-in
Drain-Pump Lift - in [mm]	27 9/16 [700]

### ETL

E.T.L.	3170288
--------	---------

### TEMPERATURE SETTINGS

Operating Temp. Cooling (DB) - °F [°C]	64 to 90 [18 to 32]
Operating Temp. Heating (DB) - °F [°C]	50 to 86 [10 to 30]

Note: Specifications are based on the following conditions:  
 Cooling: Indoor temperature of 80°F (26.7°C) DB/67°F (19.4°C) WB, and outdoor temperature of 95°F (35°C) DB/75°F (23.9°C) WB. Heating: Indoor temperature of 70°F (21.1°C) DB/60°F (15.6°C) WB, and outdoor temperature of 47°F (8.3°C) DB/43°F (6.1°C) WB. Pipe length: 25ft. (7.5m), Height difference: 0ft. (0m) (Outdoor unit - indoor unit).

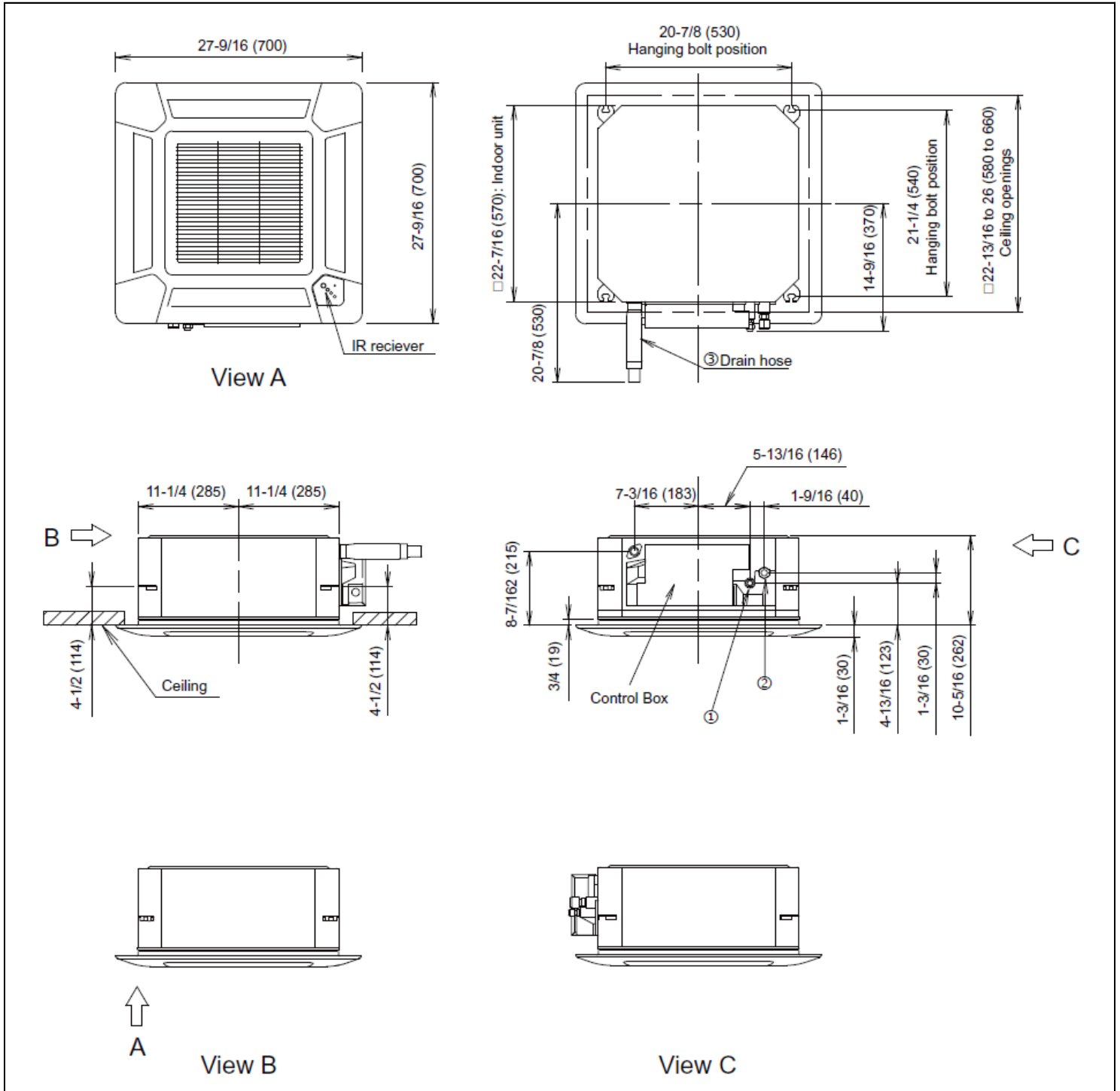


Fujitsu General America, Inc.  
 353 Route 46 West  
 Fairfield, NJ 07004  
 Toll Free: (888) 888-3424  
 Fax: (973) 836-0453  
 www.airstagevrf.com

Compact Cassette (12,000 BTU) Indoor Unit  
For Heat-pump Airstage VRF System

DIMENSIONS

Unit: In. (mm)



Fujitsu General America, Inc.  
 353 Route 46 West  
 Fairfield, NJ 07004  
 Toll Free: (888) 888-3424  
 Fax: (973) 836-0453  
 www.airstagevrf.com