

## Slim Duct (12,000 BTU) Indoor Unit For Heat-recovery/Heat-pump Airstage VRF System

Job Name \_\_\_\_\_  
 Location \_\_\_\_\_  
 Engineer \_\_\_\_\_  
 Submitted To \_\_\_\_\_  
 Submitted By \_\_\_\_\_  
 Reference \_\_\_\_\_

Date \_\_\_\_\_  
 Approval \_\_\_\_\_  
 Construction \_\_\_\_\_  
 Unit No \_\_\_\_\_  
 Drawing No \_\_\_\_\_

### FEATURES

- Quiet 3-speed fan
- Slim design require small height clearance 9-3/4"
- Adjustable Static pressure from 0 to 0.36 in.WG
- Built-in high-lift drain pump
- Flexible air intake connection (Back or bottom)
- Built-in intake air filter
- Optional Auto louver grille
- Very low power usage
- Auxiliary heat operation capability
- 10 year Extended Warranty on parts and compressor. See Warranty Statement.



### STATIC PRESSURE

Static Pressure Range - in.WG [Pa] 0 to 0.36 [0 to 90]  
 Standard Static Pressure - in.WG [Pa] 0.10 [25]

### PIPING ACCESSORIES

UTP-AX090A Separation Tube - 2-Pipe - 90 MBH or Less  
 UTP-AX180A Separation Tube - 2-Pipe - 91 to 180 MBH  
 UTP-AX567A Separation Tube - 2-Pipe - 180 MBH or More

### CONTROLLER

UTY-RNRUZZ Individual Touch Panel Controller (Wired Remote)  
 UTY-RSRY Simple Remote (WITH Master Control) 2-Wire  
 UTY-RHRY Simple Remote (WITHOUT Master Control) 2-Wire  
 UTY-LNHU Wireless Remote Controller (requires IR Receiver)

UTY-DCGY Central Remote Controller (100 units)  
 UTY-DTGYZ1 Touch Panel Controller with Internet (400 units)

### ACCESSORIES

UTD-GXSA-W Auto Louver Grille for Slim Duct  
 UTY-TEKX External Switch Controller. Use with 3-Wire remotes only.  
 UTY-XSZX Remote Sensor for ducted units

### WEIGHT AND DIMENSIONS

Enclosure - Net Weight - lbs [kg] 40 [18]  
 Enclosure - Gross Weight - lbs [kg] 51 [23]  
 Dimensions - Net (H x W x D) - in [mm] 7-13/16 x 27-9/16 x 24-7/16  
 [198 x 700 x 620]  
 Dimensions - Gross (H x W x D) - in [mm] 10-7/8 x 38-1/8 x 30-3/8  
 [276 x 968 x 772]

### CAPACITY

Capacity - Cooling - Btu/h [kW] 12,000 [3.5]  
 Capacity - Heating - Btu/h [kW] 13,500 [4]

### ELECTRICAL

Power Source 208 / 230V, 1-Phase, 60Hz  
 Available Voltage Range - VAC 187 to 253  
 Input Power - W 50  
 Full Load Amps - FLA - A 0.57  
 Max Circuit Breaker - A 15  
 Minimum Circuit Ampacity - MCA - A 0.71  
 Fuse - A (V) 5 (250)

### FAN

Fan Type 2X (Sirocco)  
 Airflow Rate - High | Medium High - CFM [m³/h] 353 [600] | 312 [530]  
 Airflow Rate - Medium | Medium Low - CFM [m³/h] 289 [490] | 265 [450]  
 Airflow Rate - Low | Quiet - CFM [m³/h] 241 [410] | 200 [340]

### SOUND PRESSURE

Sound Pressure Level - dB(A) 30/28/27/26/24/22

### WIRING

Communication Cable LonWorks (Fujitsu Pink Cable. See AE Bulletin 009)

### PIPING

Connection Pipe Diameter - Liquid (Brazing) - in [mm] ø 1/4 [6.35]  
 Connection Pipe Diameter - Gas (Brazing) - in [mm] ø 1/2 [12.70]  
 Connection Pipe Diameter - Drain (ID; OD) - in [mm] ø 3/4 [19]  
 Drain-Pump Built-in  
 Drain-Pump Lift - in [mm] 33 7/16 [850]

### ETL

E.T.L. 91987

### TEMPERATURE RANGES

Operating Temp. Cooling (DB) - °F [°C] 64 to 88 [18 to 31]  
 Operating Temp. Heating (DB) - °F [°C] 50 to 88 [10 to 31]

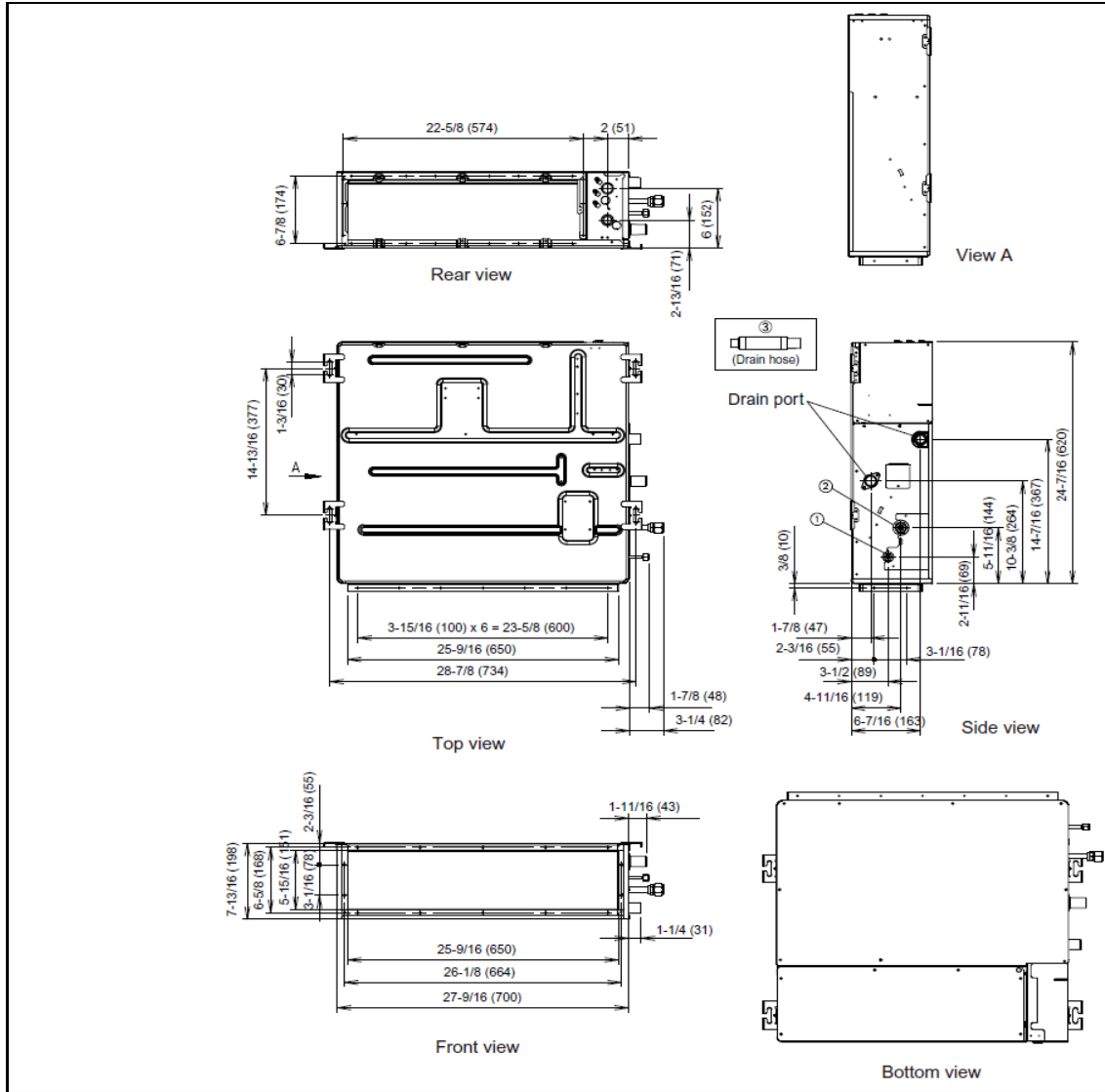
Note: Specifications are based on the following conditions:  
 Cooling: Indoor temperature of 80°F (26.7°C) DB/67°F (19.4°C) WB, and outdoor temperature of 95°F (35°C) DB/75°F (23.9°C) WB. Heating: Indoor temperature of 70°F (21.1°C) DB/60°F (15.6°C) WB, and outdoor temperature of 47°F (8.3°C) DB/43°F (6.1°C) WB. Pipe length: 25ft. (7.5m), Height difference: 0ft. (0m) (Outdoor unit - indoor unit).

SUBMITTAL ARUL12TLAV2

Slim Duct (12,000 BTU) Indoor Unit  
For Heat-recovery/Heat-pump Airstage VRF System

DIMENSIONS

Unit: In. (mm)



Fujitsu General America, Inc.  
353 Route 46 West  
Fairfield, NJ 07004  
Toll Free: (888) 888-3424  
Fax: (973) 836-0453  
www.airstagevrf.com