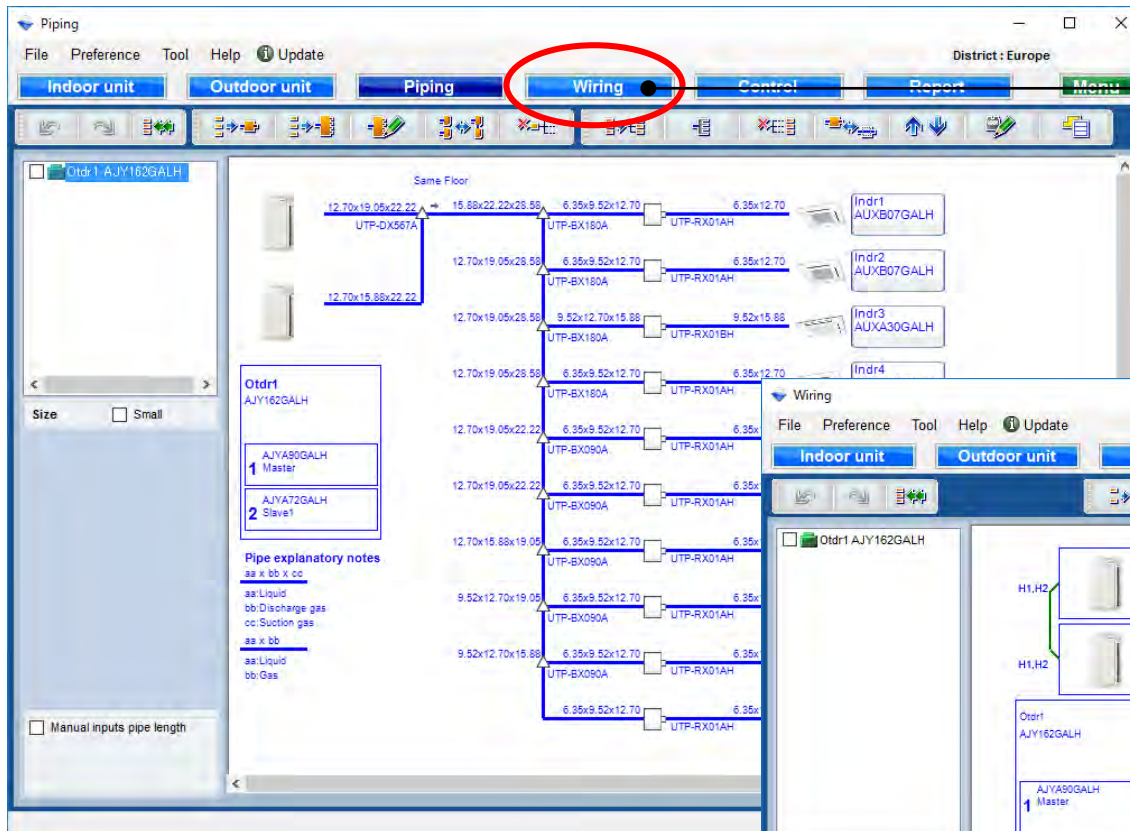
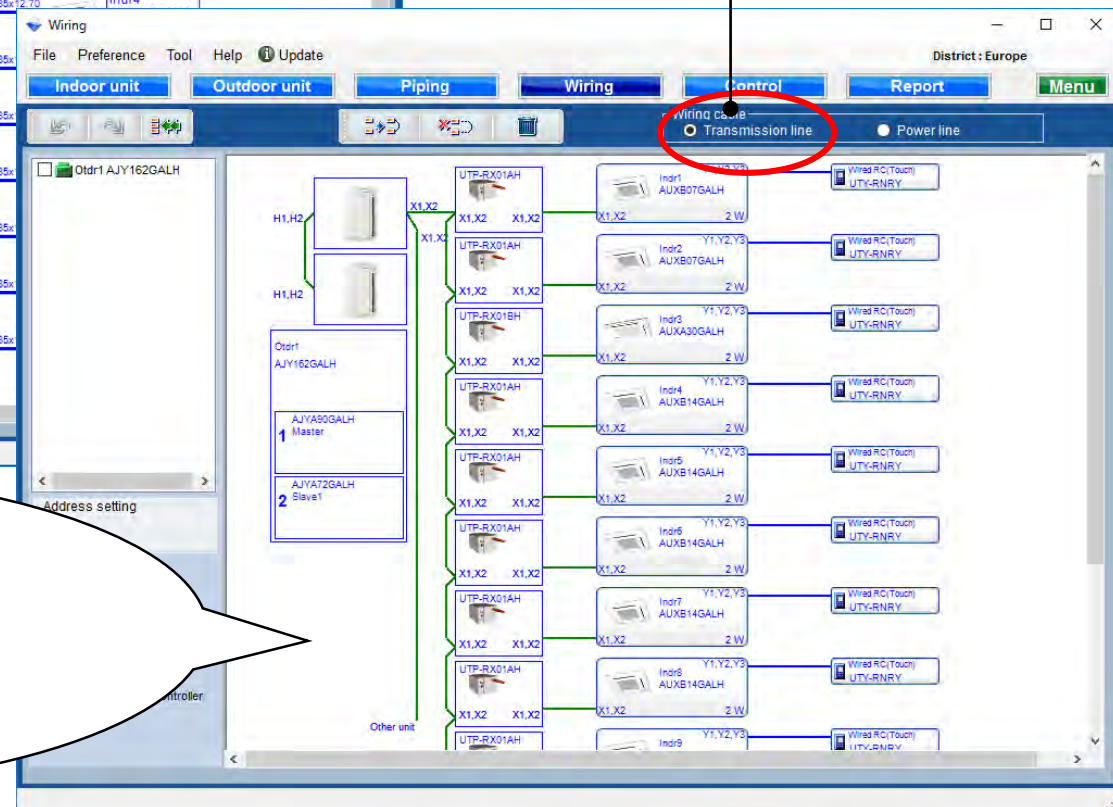


## Transmission line



Select "Wiring"

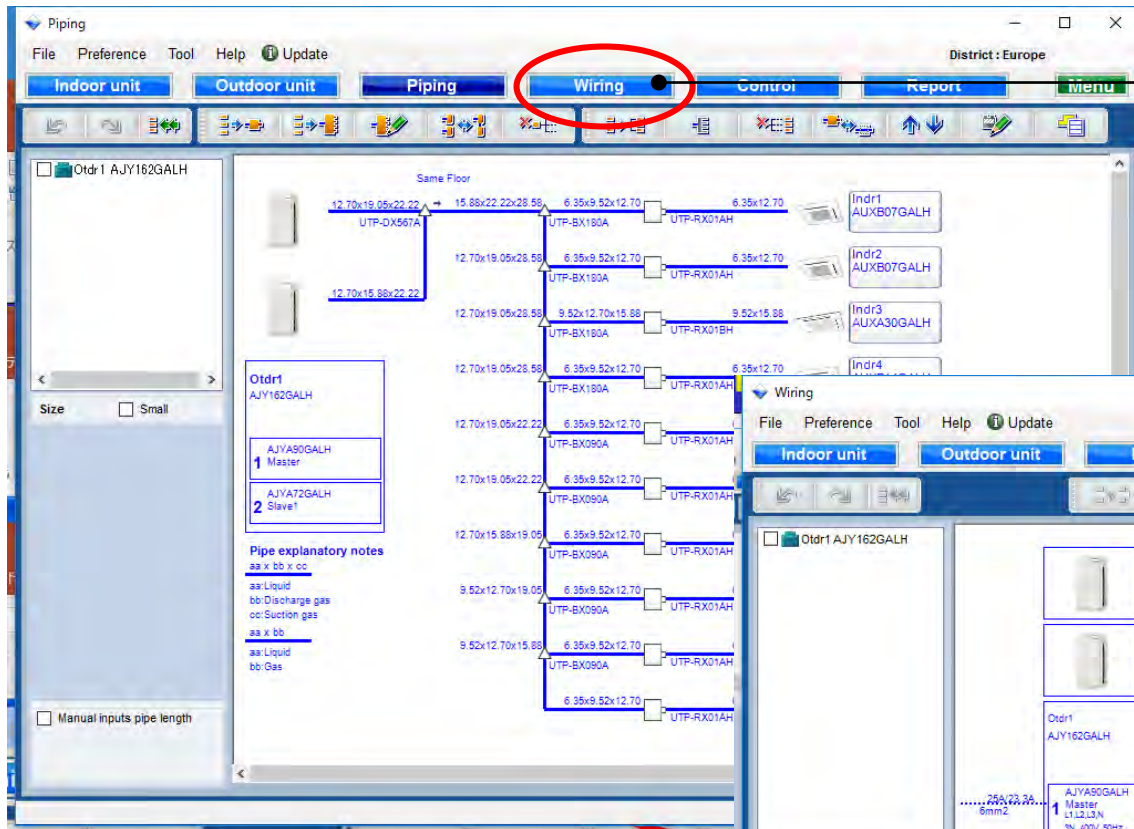
Select "Transmission line"



: Transmission line

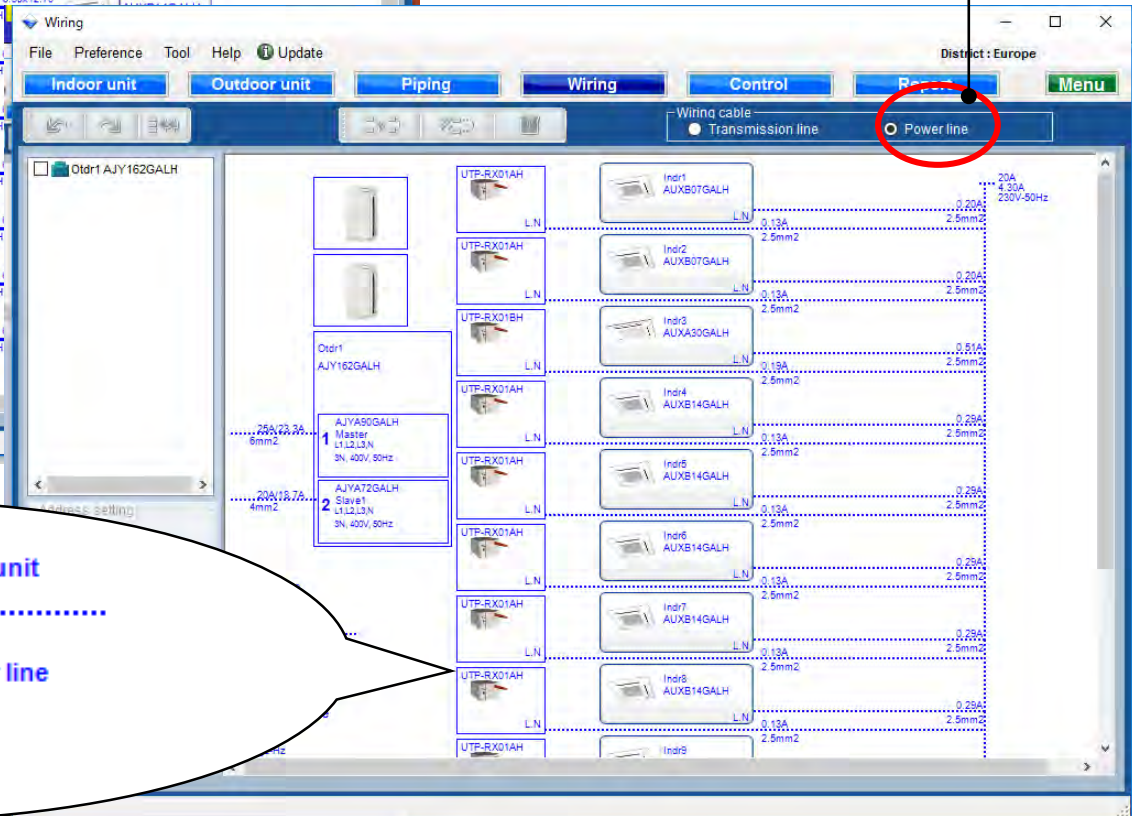
: Remote controller line

## Power line



Select "Wiring"

Select "Power line"



... : Power line

Outdoor  
Breaker/MCA  
Diameter

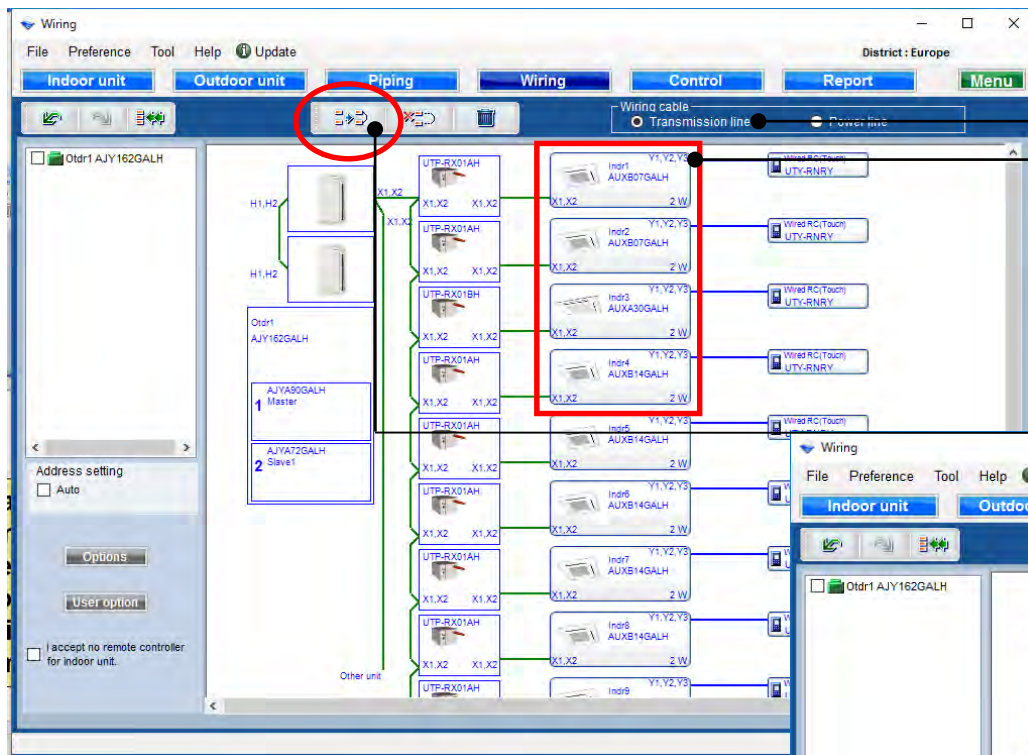
Indoor, RB unit

MCA  
Diameter

Total power line  
Breaker  
MCA  
Voltage-Hz



## Grouping(1/2)

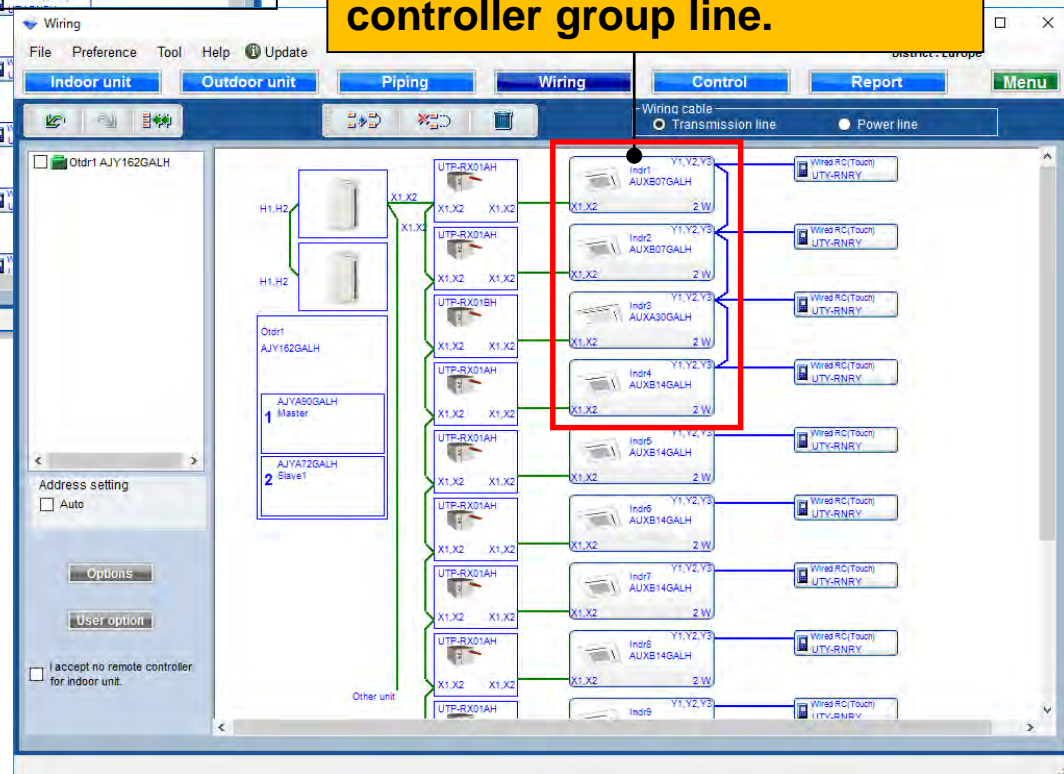


“Total powerline / Each powerline” with “preference” can be edited

Select indoor unit

Select “Group remote controller”

Automatically create remote controller group line.





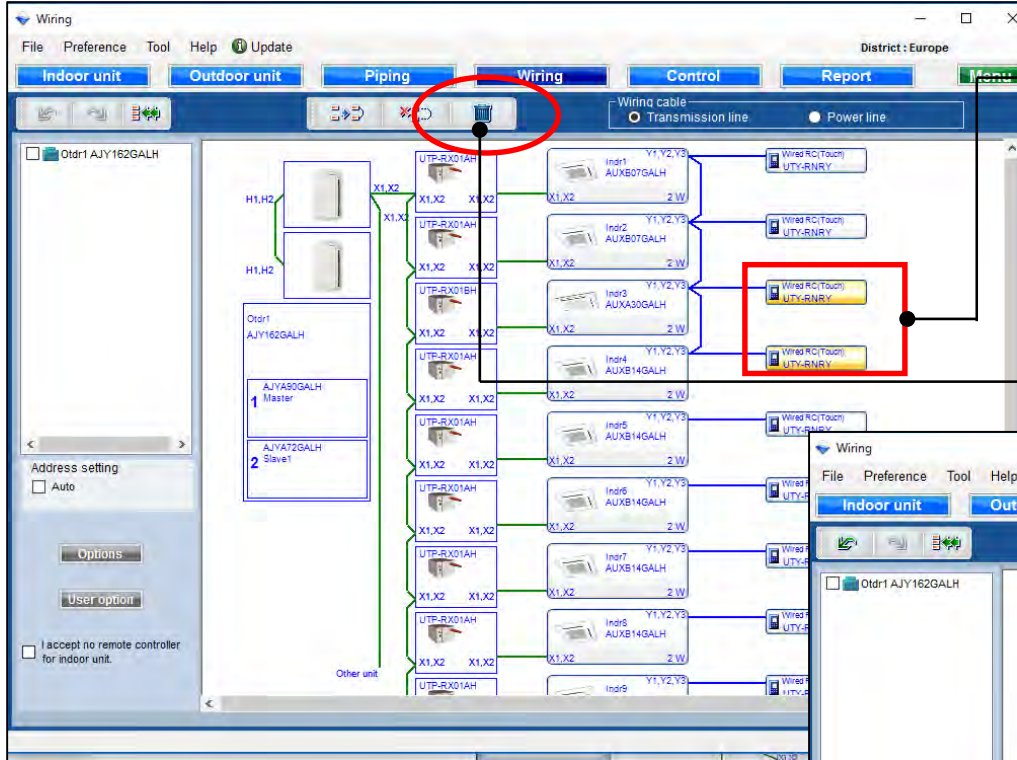
## Check box

The screenshot displays the 'Wiring' software interface. The top menu bar includes 'File', 'Preference', 'Tool', 'Help', and 'Update'. Below the menu is a toolbar with icons for undo, redo, and other functions. The main workspace shows a wiring diagram with various components connected by lines. On the left side, there is a list of components, with 'Otdr1 AJY162GALH' highlighted and its checkbox checked. Below this list are sections for 'Address setting' (with an 'Auto' checkbox) and 'Options' (with a 'User option' button). At the bottom left, there is a checkbox labeled 'I accept no remote controller for indoor unit.' The diagram itself shows a central vertical line representing the main supply, with multiple branches leading to indoor units (Indr1 to Indr9) and outdoor units (UTP-RX01AH). Each indoor unit is connected to a 'Wired RC(Touch) UTY-RNRY' device. The interface also shows a 'Wiring cable' section with radio buttons for 'Transmission line' and 'Power line'. The 'District: Europe' is indicated in the top right corner.

The checked refrigerant systems cannot be edited



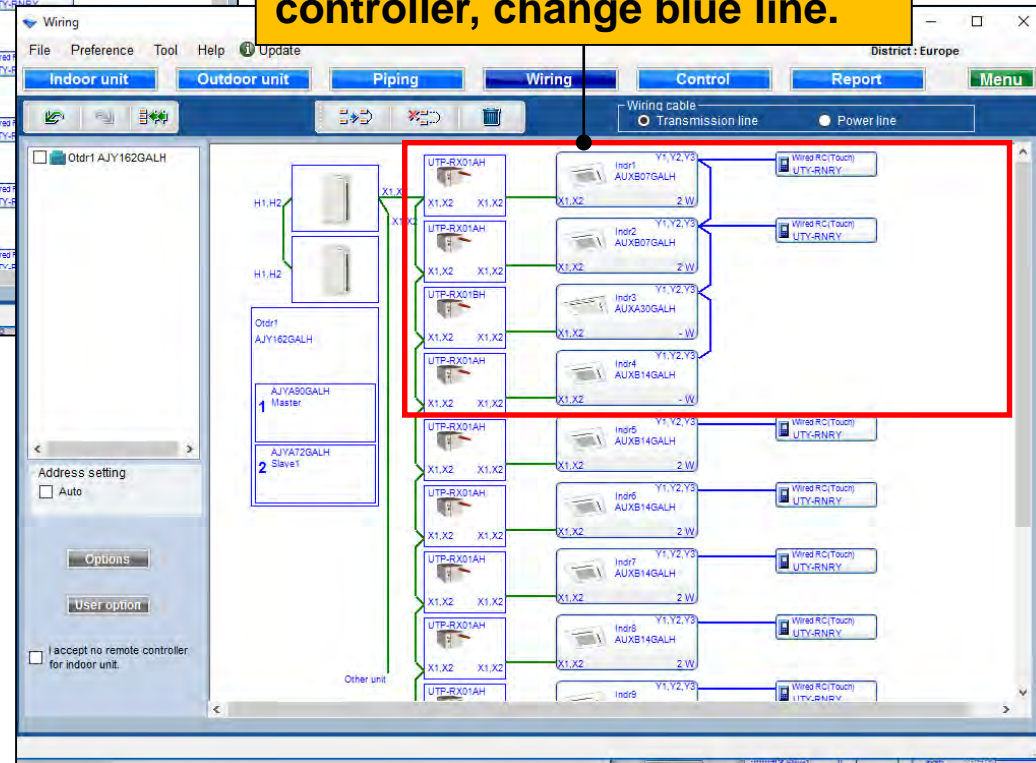
## Delete



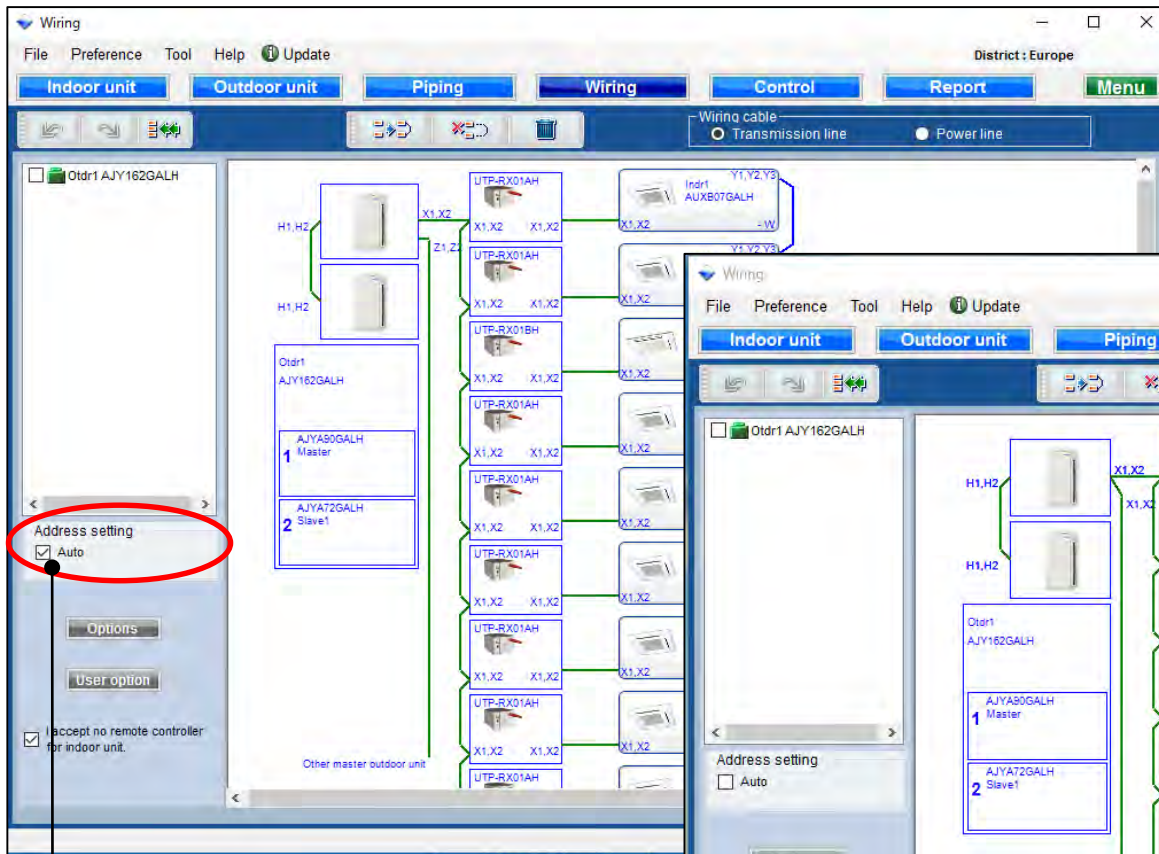
Select remote controller

Select "Delete remote controller"

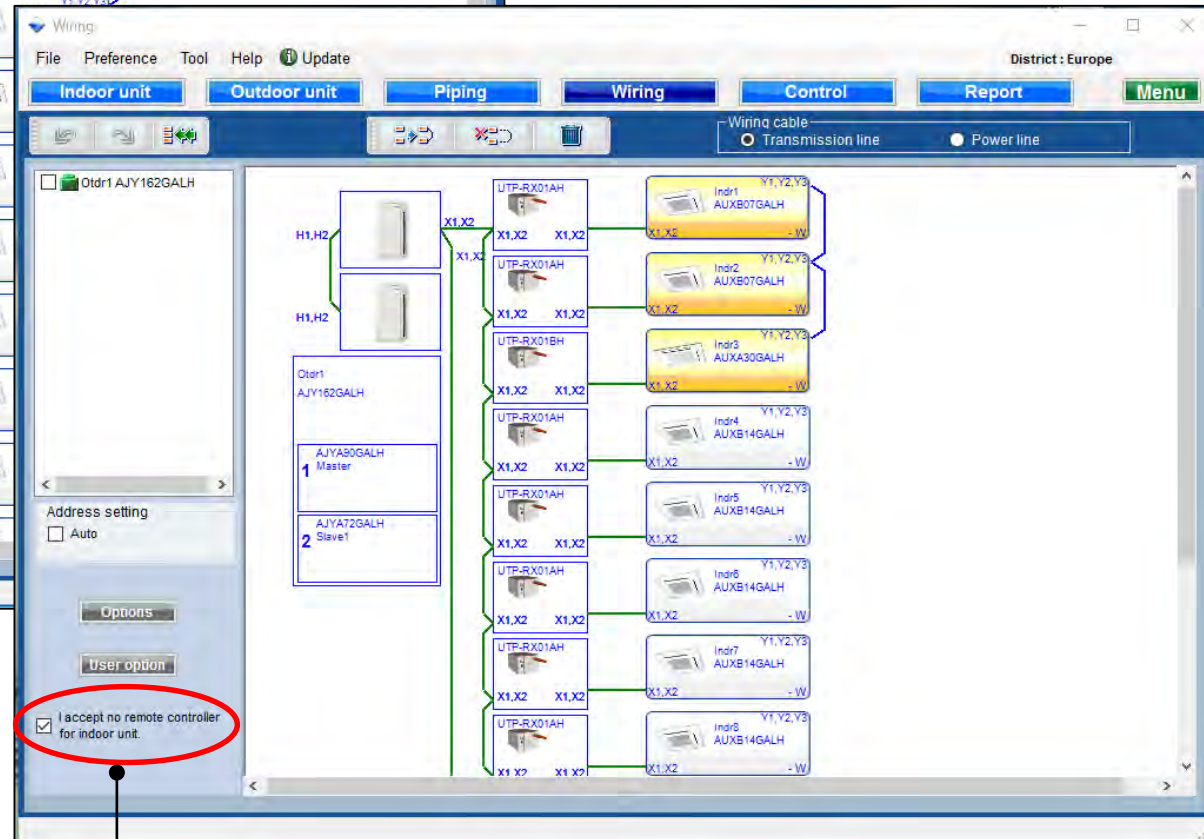
Automatically delete remote controller, change blue line.



## Address setting

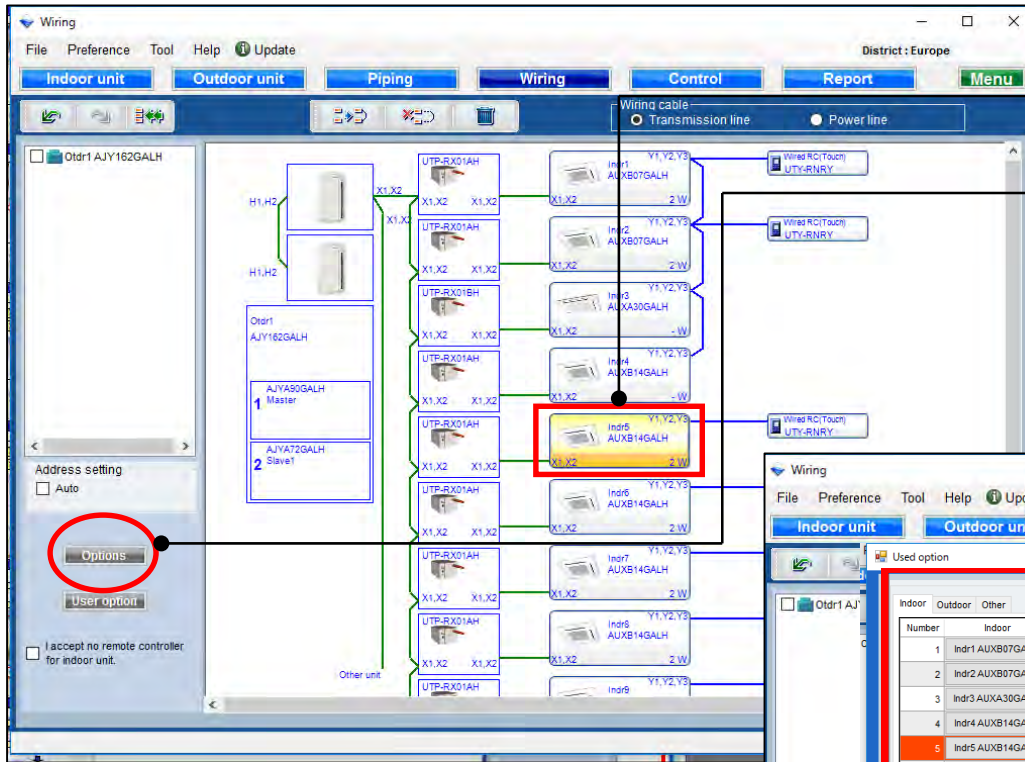


Check if "Auto Address" is used



Check if "Remote controller" is unnecessary

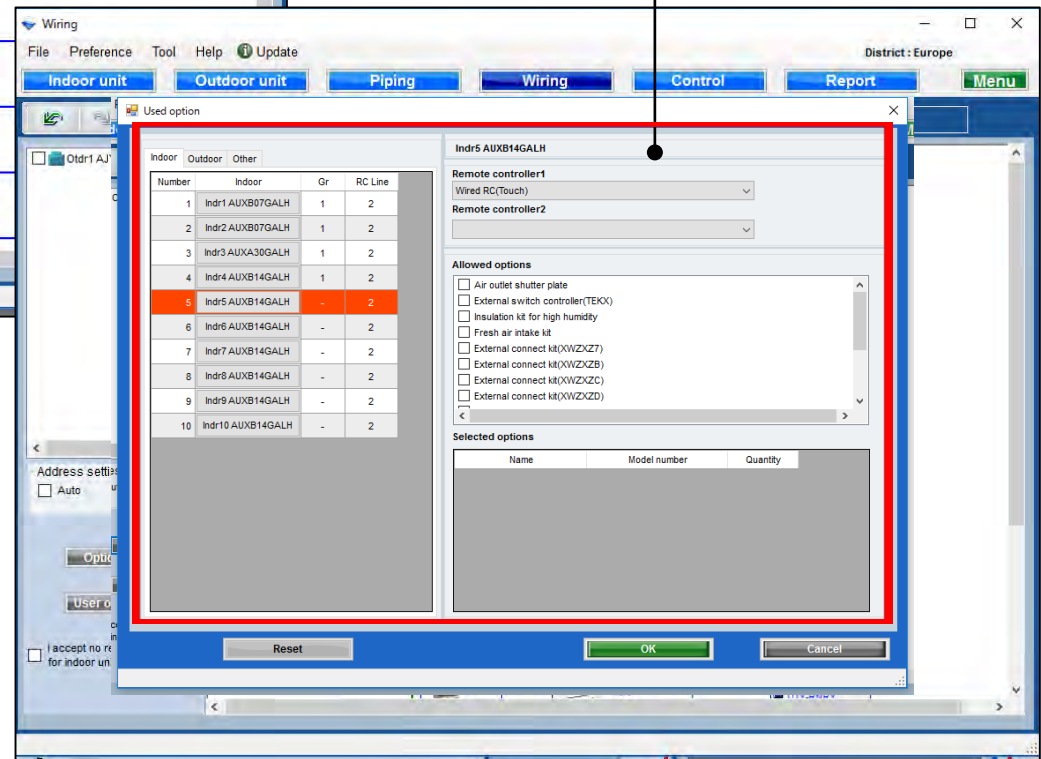
## option



Select indoor unit

Select "Options"

Open used option screen.





## Used option

Indoor Outdoor Other

Number	Indoor	Gr	RC Line
1	Indr1 AUXB07GALH	1	2
2	Indr2 AUXB07GALH	1	2
3	Indr3 AUXA30GALH	1	2
4	Indr4 AUXB14GALH	1	2
5	Indr5 AUXB14GALH	-	2
6	Indr6 AUXB14GALH	-	2
7	Indr7 AUXB14GALH	-	2
8	Indr8 AUXB14GALH	-	2
9	Indr9 AUXB14GALH	-	2
10	Indr10 AUXB14GALH	-	2

Indr5 AUXB14GALH

Remote controller1  
Wired RC(Touch)

Remote controller2  
Simple RC 2-Wire(With operation mode)

Allowed options

- Air outlet shutter plate
- External switch controller(TEKX)
- Insulation kit for high humidity
- Fresh air intake kit
- External connect kit(XWZXZ7)
- External connect kit(XWZXZB)
- External connect kit(XWZXZC)
- External connect kit(XWZXZD)

Selected options

Name	Model number	Quantity
Air outlet shutter plate	UTR-YDZB	1
Insulation kit for high humidity	UTZ-KXGC	1
Fresh air intake kit	UTZ-VXAA	1

Reset OK Cancel

Select remote controller  
Two wires and three wires  
cannot be mixed  
An error occurs if these are  
mixed

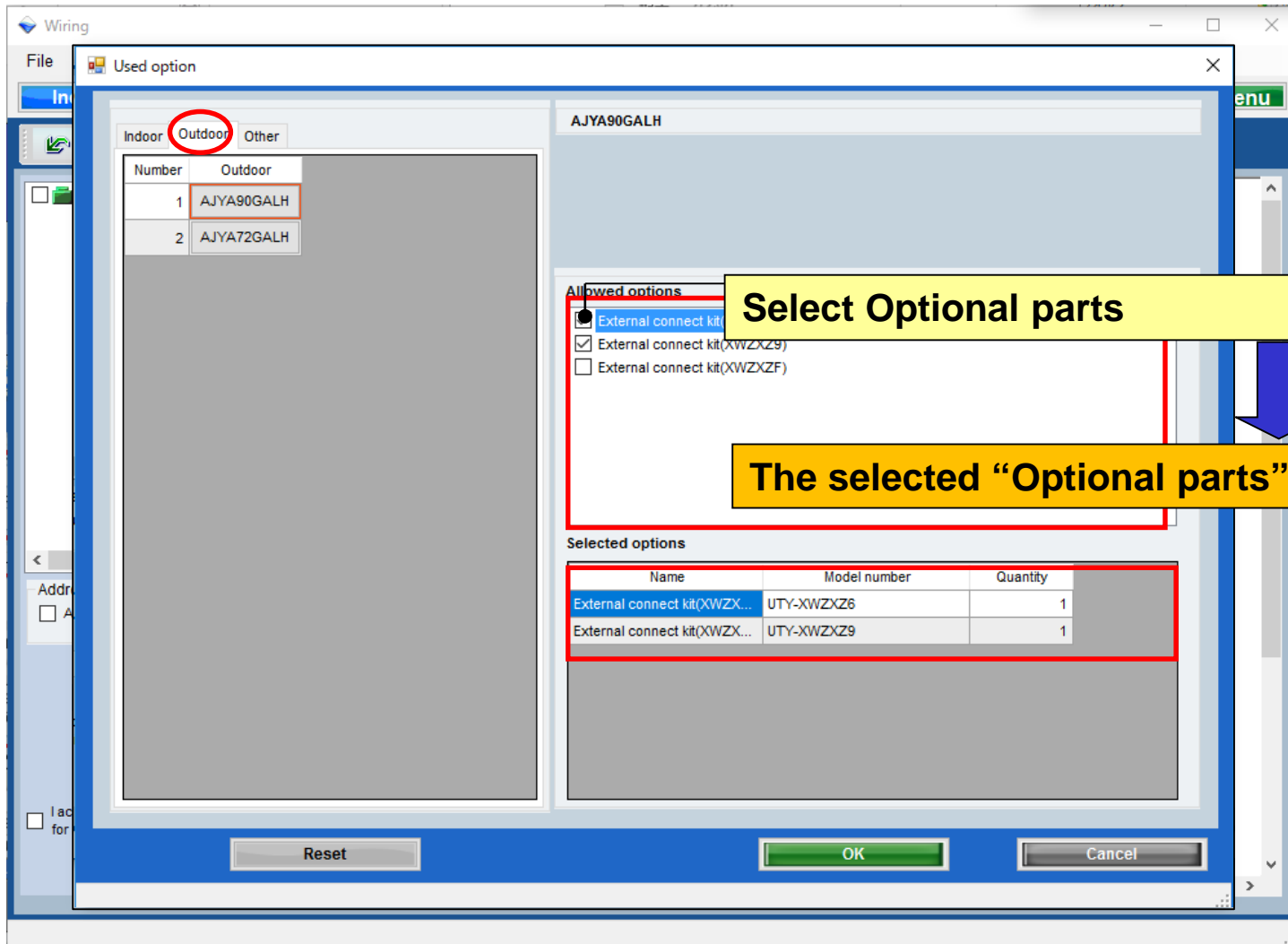
Select Optional parts

Input quantity

Press "Reset" to  
return to default

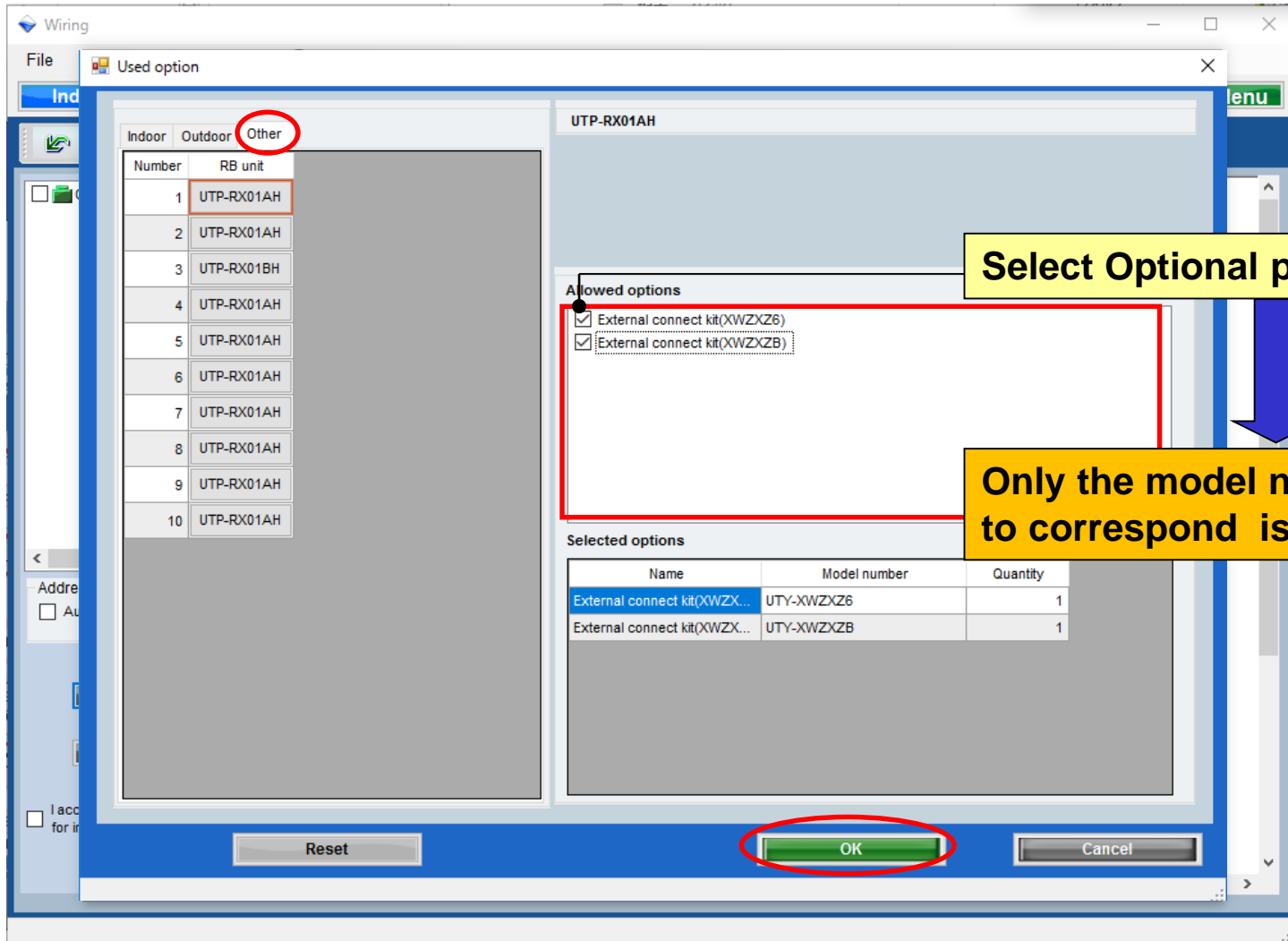
The selected options are displayed in "Report"

## Used option



The selected options are displayed in "Report"

## Used option



The selected options are displayed in "Report"



## User option

**Select "User Options"**

**Open User options (Refrigerant)**

The software interface shows the 'Wiring' tab selected. The 'User option' button is circled in red. The 'User options(Refrigerant)' dialog box is open, showing the following settings:

- Inside classification: A1
- Small classification: A11
- User option:  A112,  A113

**Selected user options**

User Option item	Quantity
A112	1
A113	1
111	1

**Each**

Device model name	Quantity
AUXA30GALH	1
AUXB07GALH	2
AUXB14GALH	7

OK Cancel

## User option (Refrigerant)

User options(Refrigerant)

Inside classification  
A1

Small classification  
A11

User option  
 A112  
 A113

Selected user options

User Option item	Quantity
A112	1
A113	1

Each

Device model name	Quantity
AUXA30GALH	
AUXB07GALH	2
AUXB14GALH	7

OK Cancel

Select "Each or Summary"  
The displayed content changes

Select "Inside classification"

Select "Small classification"

Check "User option"

Check "User option"

The selected options are displayed in "Report"