

Output

Report

File Preference Tool Help Update District: Europe

Indoor unit Outdoor unit Piping Wiring Report Menu

Project

Select

Material list Indoor unit Outdoor unit Option 1

Option 2 User options(Project) User options(Refrigerant)

Item	Model	Quantity	Type	Remarks1	Remarks2
Outdoor	AOYG45LBT8	1	8 Rooms Multi System		
Indoor	ALYG07LVL	6	Compact cassette		
Remote controller	Accessory1	6	Wireless RC(Accessory)		
Options	UTG-UFYD-W	6	Cassette Grille		
Branch kit	UTP-SX248A	1	Separation tube		
Branch Box	UTP-PY03A	2	Branch Box		
Pipe	6.35	0.0		Unit: m	Total pipe length:
Pipe	9.52	0.0		Unit: m	Total pipe length:
Pipe	15.88	0.0		Unit: m	Total pipe length:
Refrigerant	R410A	0.0		Unit: lbs	Total Refrigerant:

Select "Output"

Change to Output screen

Output

File Preference Tool Help Update Download DXF District: Europe

Select output item

- Detail
- Material list
- Indoor unit details
- Outdoor unit details
- Piping Diagrams
- Wiring Diagrams
- Options
- Piping / Branch kit / Header details
- User option
- Room list

Series

VRF system J 8RM Multi System Single

Report kind

Word(.rtf) Doc PDF

CSV CSV(QMS) CSV(Simulation)

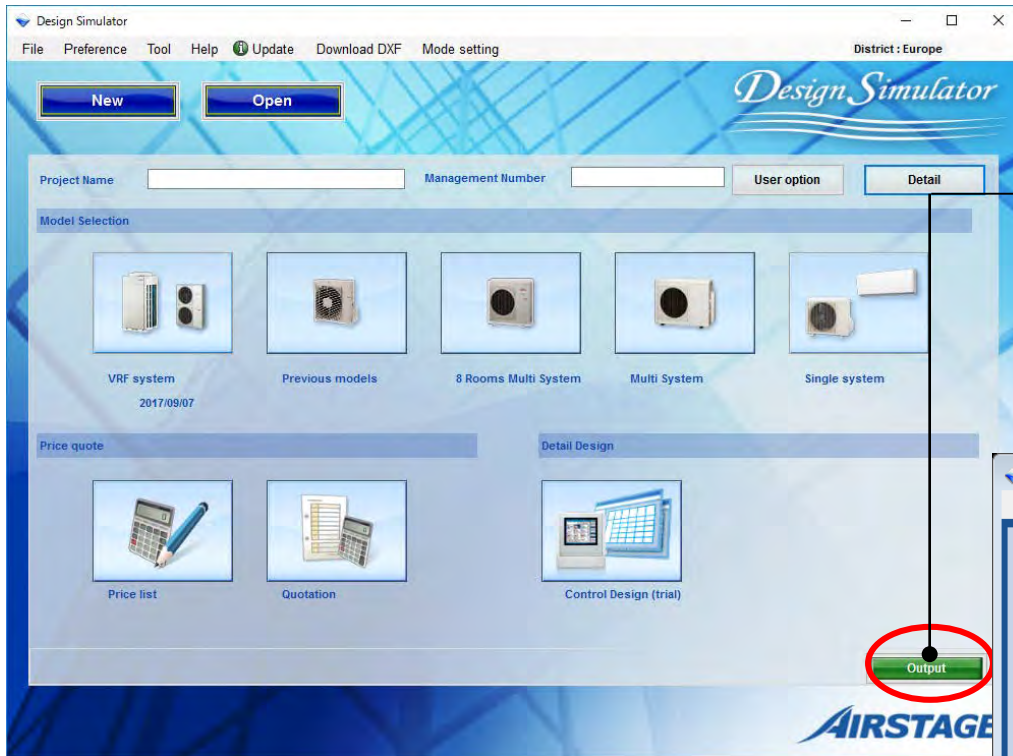
DXF

Indoor Unit / Outdoor unit CAD data

2D(DXF) 3D(RFA)

CAD data

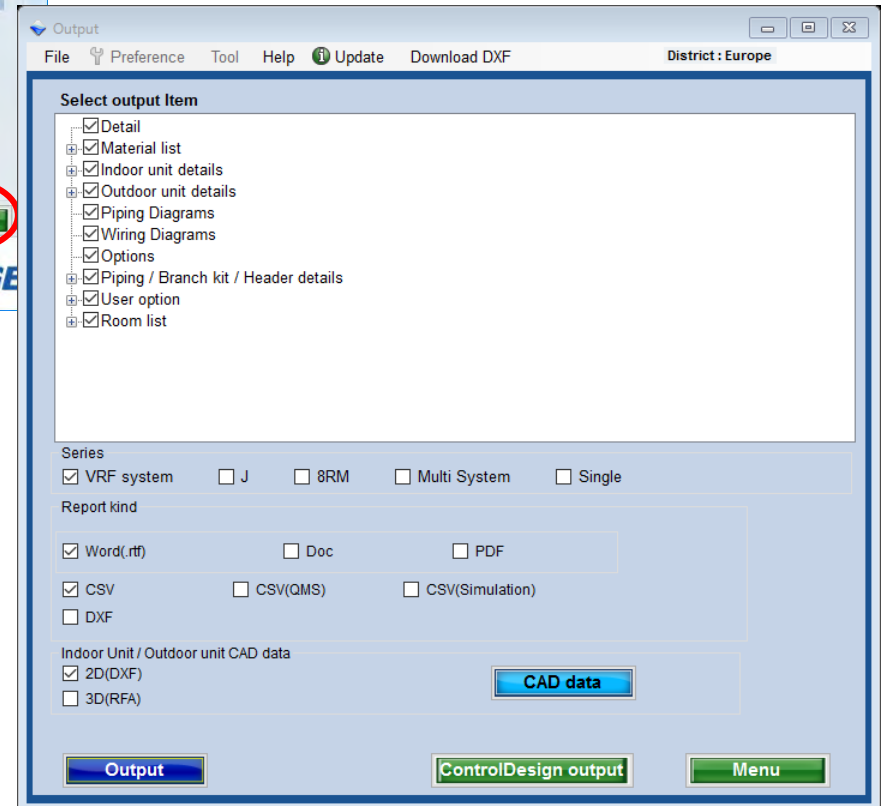
Output ControlDesign output Menu



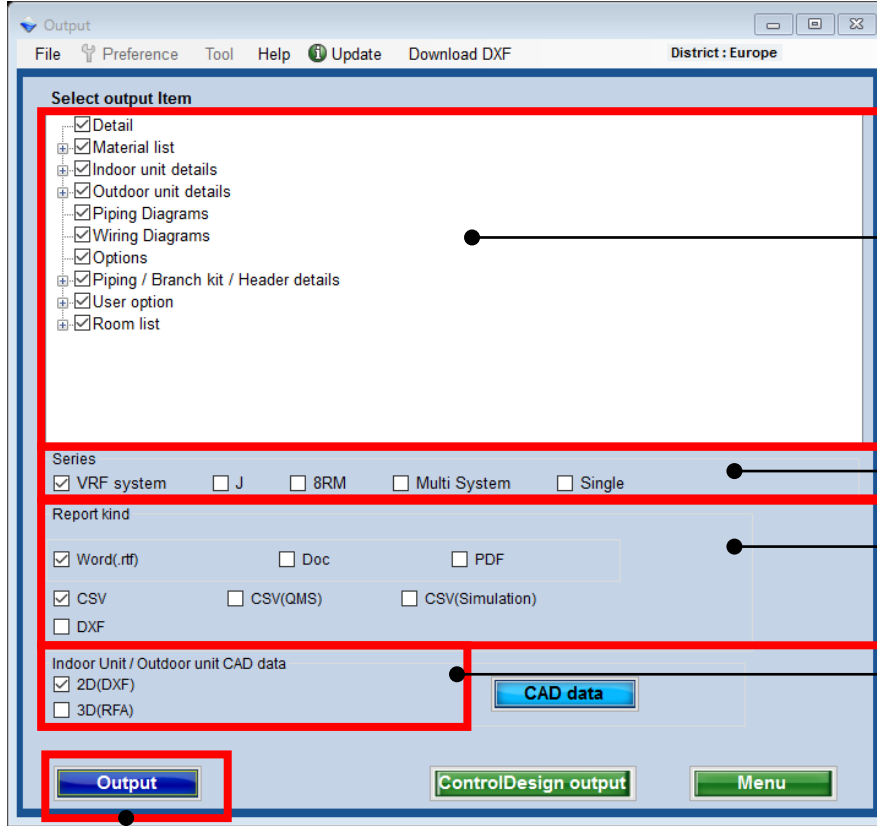
Select "Output"



Change to Output screen



Output (1/2)



The item to which the check adheres is output.

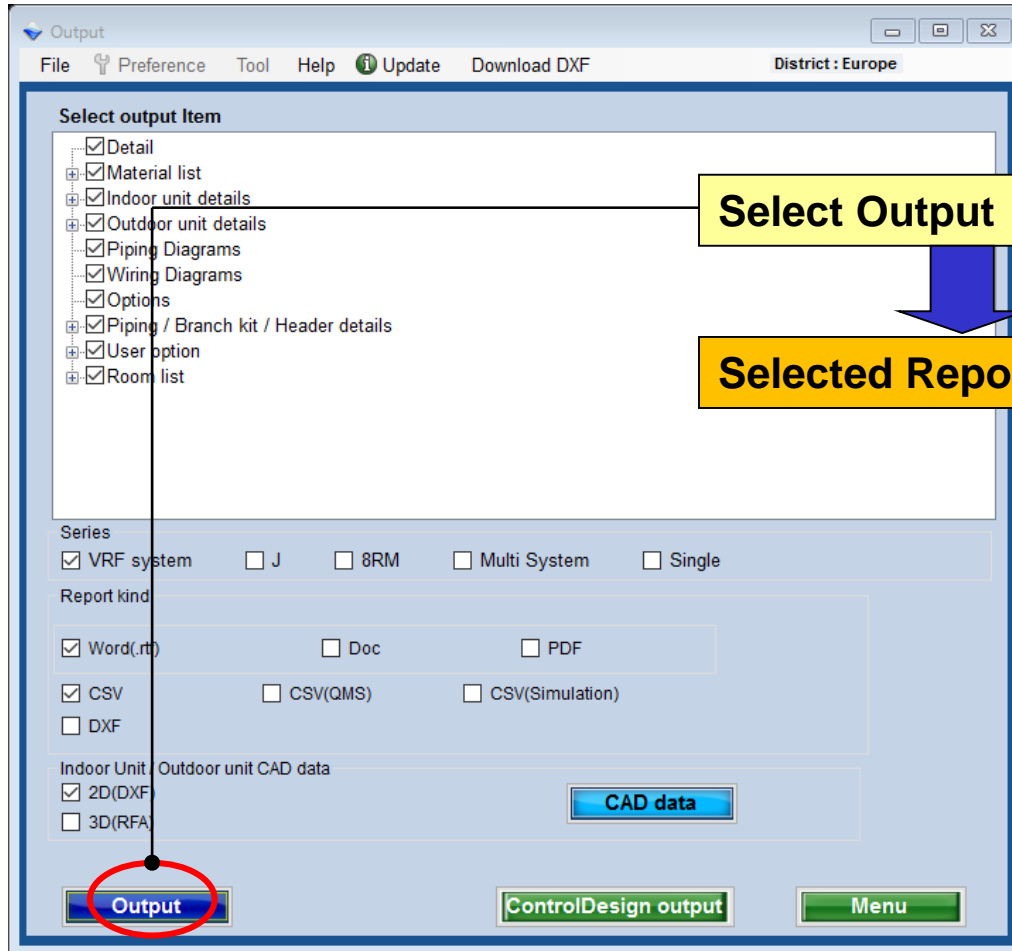
Select Series

Select Report kind
*Refer to 1 to 6

Select Indoor Unit/Outdoor
unit CAD date *Refer to 7 to 8

Select Output

Output (2/2)



1.Material list

Material List

Model	Quantity	Unit	Remarks
UJY12GALH	1	Unit	Indoor Head Primary
UJY12GALH	7	Devices	
UJY12GALH	1	Unit	Head Kit
UJY12GALH	7	Devices	
UJY12GALH	2	Devices	
UJY12GALH	7	Devices	

2.Indoor unit details

Indoor Unit Details

Model	Capacity	Unit	Remarks
UJY12GALH	12.0	kW	Indoor Unit
UJY12GALH	12.0	kW	Indoor Unit
UJY12GALH	12.0	kW	Indoor Unit
UJY12GALH	12.0	kW	Indoor Unit
UJY12GALH	12.0	kW	Indoor Unit
UJY12GALH	12.0	kW	Indoor Unit
UJY12GALH	12.0	kW	Indoor Unit

3.Outdoor unit details

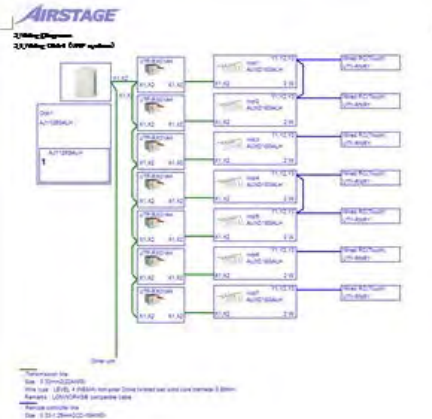
Outdoor Unit Details

Model	Capacity	Unit	Remarks
UJY12GALH	12.0	kW	Outdoor Unit
UJY12GALH	12.0	kW	Outdoor Unit
UJY12GALH	12.0	kW	Outdoor Unit
UJY12GALH	12.0	kW	Outdoor Unit
UJY12GALH	12.0	kW	Outdoor Unit
UJY12GALH	12.0	kW	Outdoor Unit
UJY12GALH	12.0	kW	Outdoor Unit

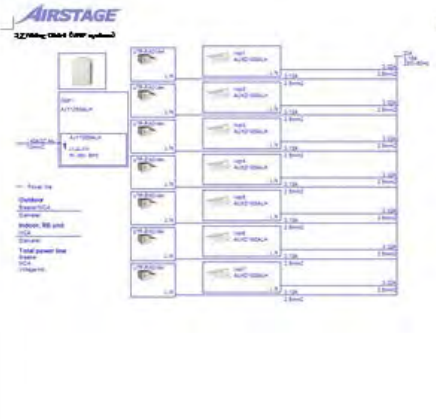
4.Piping Diagrams



5.WiringDiagrams (Transmission line)



5.WiringDiagrams (Power line)



6.Options

Options

Option	Model	Type	Qty	Model	Type	Qty
Opt1	UJY12GALH	Wired RCT (Loch)	1	UJY12GALH-W	Cassette Grille	1
Opt2	UJY12GALH	Wired RCT (Loch)	1	UJY12GALH-W	Cassette Grille	1
Opt3	UJY12GALH	Wired RCT (Loch)	1	UJY12GALH-W	Cassette Grille	1
Opt4	UJY12GALH	Wired RCT (Loch)	1	UJY12GALH-W	Cassette Grille	1
Opt5	UJY12GALH	Wired RCT (Loch)	1	UJY12GALH-W	Cassette Grille	1
Opt6	UJY12GALH	Wired RCT (Loch)	1	UJY12GALH-W	Cassette Grille	1
Opt7	UJY12GALH	Wired RCT (Loch)	1	UJY12GALH-W	Cassette Grille	1

7.Piping / Branch kit / Header details

7.2 Header details

7.3 Piping details

Name	Model	9.02	12.70	15.88	18.05	22.22	28.58
Opt1	AJY12GALH	0.0	0.0	0.0	0.0	0.0	0.0

7.4 Branch box details

Name	Refing R(B1DA)(ts)	Add Refing R(B1DA)(ts)	Total Refing R(B1DA)(ts)
Opt1	26.0	13.0	41.0

7.5 RB details

Name	Model	UTP-R021AH	UTP-R021BH	UTP-R021CH	UTP-R021DH
Opt1	AJY12GALH	7	0	0	0

8.User option

User Option

Option	Model	Type	Qty	Model	Type	Qty
Opt1	AJY12GALH	Wired RCT (Loch)	1	AJY12GALH	Wired RCT (Loch)	1
Opt2	AJY12GALH	Wired RCT (Loch)	1	AJY12GALH	Wired RCT (Loch)	1

9.Room list

Room List

Room No.	Room Name	Room Area
01	Room 01	12.0
02	Room 02	12.0
03	Room 03	12.0
04	Room 04	12.0
05	Room 05	12.0
06	Room 06	12.0
07	Room 07	12.0

1.Material list

1.1 Equipment

Model	Quantity	Unit	Remarks
UJY12GALH	1	Unit	Indoor Unit
UJY12GALH	7	Unit	Outdoor Unit
UJY12GALH	1	Unit	Header Kit
UJY12GALH	1	Unit	Branch Box
UJY12GALH	2	Unit	Wiring Kit
UJY12GALH	2	Unit	Wiring Kit

1.2 Equipment (2-Step)

Model	Quantity	Unit	Remarks
UJY12GALH	1	Unit	Indoor Unit
UJY12GALH	7	Unit	Outdoor Unit
UJY12GALH	1	Unit	Header Kit
UJY12GALH	1	Unit	Branch Box
UJY12GALH	2	Unit	Wiring Kit
UJY12GALH	2	Unit	Wiring Kit

1.3 Equipment (3-Step)

Model	Quantity	Unit	Remarks
UJY12GALH	1	Unit	Indoor Unit
UJY12GALH	7	Unit	Outdoor Unit
UJY12GALH	1	Unit	Header Kit
UJY12GALH	1	Unit	Branch Box
UJY12GALH	2	Unit	Wiring Kit
UJY12GALH	2	Unit	Wiring Kit

2.Indoor unit details

2.1 Indoor unit details

Model	Capacity	Unit	Remarks
UJY12GALH	12	Unit	Indoor Unit
UJY12GALH	12	Unit	Indoor Unit
UJY12GALH	12	Unit	Indoor Unit
UJY12GALH	12	Unit	Indoor Unit
UJY12GALH	12	Unit	Indoor Unit
UJY12GALH	12	Unit	Indoor Unit
UJY12GALH	12	Unit	Indoor Unit
UJY12GALH	12	Unit	Indoor Unit
UJY12GALH	12	Unit	Indoor Unit

2.2 Outdoor unit details

Model	Capacity	Unit	Remarks
UJY12GALH	12	Unit	Outdoor Unit
UJY12GALH	12	Unit	Outdoor Unit
UJY12GALH	12	Unit	Outdoor Unit
UJY12GALH	12	Unit	Outdoor Unit
UJY12GALH	12	Unit	Outdoor Unit
UJY12GALH	12	Unit	Outdoor Unit
UJY12GALH	12	Unit	Outdoor Unit
UJY12GALH	12	Unit	Outdoor Unit
UJY12GALH	12	Unit	Outdoor Unit

3.Outdoor unit details

3.1 Outdoor unit details

Model	Capacity	Unit	Remarks
UJY12GALH	12	Unit	Outdoor Unit
UJY12GALH	12	Unit	Outdoor Unit
UJY12GALH	12	Unit	Outdoor Unit
UJY12GALH	12	Unit	Outdoor Unit
UJY12GALH	12	Unit	Outdoor Unit
UJY12GALH	12	Unit	Outdoor Unit
UJY12GALH	12	Unit	Outdoor Unit
UJY12GALH	12	Unit	Outdoor Unit
UJY12GALH	12	Unit	Outdoor Unit

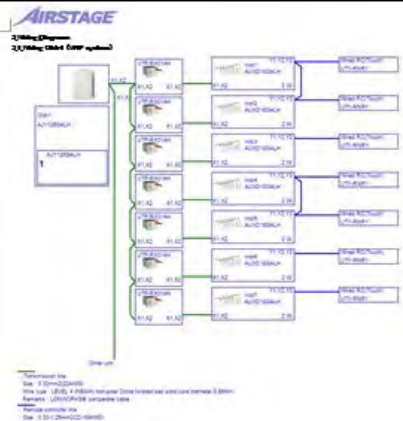
3.2 Outdoor unit details

Model	Capacity	Unit	Remarks
UJY12GALH	12	Unit	Outdoor Unit
UJY12GALH	12	Unit	Outdoor Unit
UJY12GALH	12	Unit	Outdoor Unit
UJY12GALH	12	Unit	Outdoor Unit
UJY12GALH	12	Unit	Outdoor Unit
UJY12GALH	12	Unit	Outdoor Unit
UJY12GALH	12	Unit	Outdoor Unit
UJY12GALH	12	Unit	Outdoor Unit
UJY12GALH	12	Unit	Outdoor Unit

4.Piping Diagrams



5.WiringDiagrams (Transmission line)



5.WiringDiagrams (Power line)



6.Options

6.Options

Model	Capacity	Unit	Remarks
UJY12GALH	12	Unit	Indoor Unit
UJY12GALH	12	Unit	Outdoor Unit
UJY12GALH	12	Unit	Header Kit
UJY12GALH	12	Unit	Branch Box
UJY12GALH	12	Unit	Wiring Kit
UJY12GALH	12	Unit	Wiring Kit

7.Piping / Branch kit / Header details

7.2 Header details

Name	Model	9.02	12.70	15.88	18.05	22.22	28.58
Drp1	AJY12GALH	0.0	0.0	0.0	0.0	0.0	0.0

7.3 Piping details

Name	Refing (R10A)(m)	Add Refing (R10A)(m)	Total Refing (R10A)(m)
Drp1	26.0	13.0	41.0

8.User option

8.1 User option

Model	Capacity	Unit	Remarks
UJY12GALH	12	Unit	Indoor Unit
UJY12GALH	12	Unit	Outdoor Unit
UJY12GALH	12	Unit	Header Kit
UJY12GALH	12	Unit	Branch Box
UJY12GALH	12	Unit	Wiring Kit
UJY12GALH	12	Unit	Wiring Kit

9.Room list

9.1 Room list

Room Name	Area (m²)	Volume (m³)
Room 1	12.70	15.88
Room 2	15.88	18.05
Room 3	18.05	22.22
Room 4	22.22	28.58

1.Material list

Item	Quantity	Remarks
1.000000	1	1.000000
2.000000	7	2.000000
3.000000	1	3.000000
4.000000	2	4.000000
5.000000	2	5.000000
6.000000	2	6.000000

2.Indoor unit details

Model	Capacity	Remarks
1.000000	1	1.000000
2.000000	7	2.000000
3.000000	1	3.000000
4.000000	2	4.000000
5.000000	2	5.000000
6.000000	2	6.000000

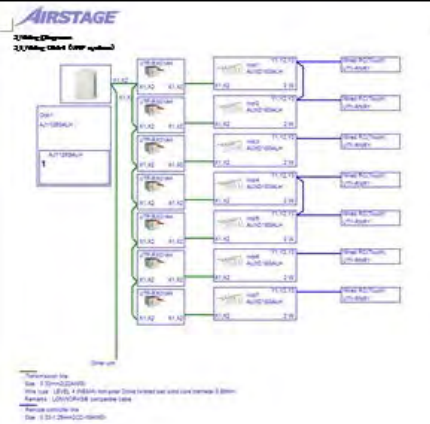
3.Outdoor unit details

Model	Capacity	Remarks
1.000000	1	1.000000
2.000000	7	2.000000
3.000000	1	3.000000
4.000000	2	4.000000
5.000000	2	5.000000
6.000000	2	6.000000

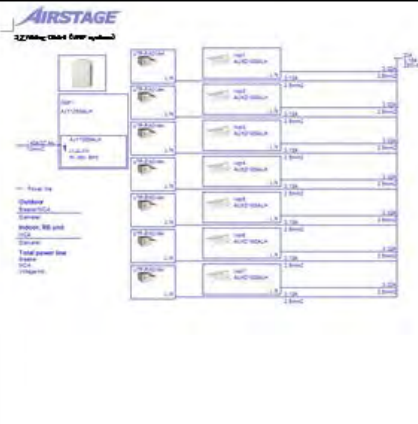
4.Piping Diagrams



5.WiringDiagrams (Transmission line)



5.WiringDiagrams (Power line)



6.Options

Name	Model	Quantity
1.000000	1.000000	1
2.000000	2.000000	7
3.000000	3.000000	1
4.000000	4.000000	2
5.000000	5.000000	2
6.000000	6.000000	2

7.Piping / Branch kit / Header details

Name	Model	Capacity	Remarks
1.000000	1.000000	1	1.000000
2.000000	2.000000	7	2.000000
3.000000	3.000000	1	3.000000
4.000000	4.000000	2	4.000000
5.000000	5.000000	2	5.000000
6.000000	6.000000	2	6.000000

8.User option

Name	Model	Quantity
1.000000	1.000000	1
2.000000	2.000000	7
3.000000	3.000000	1
4.000000	4.000000	2
5.000000	5.000000	2
6.000000	6.000000	2

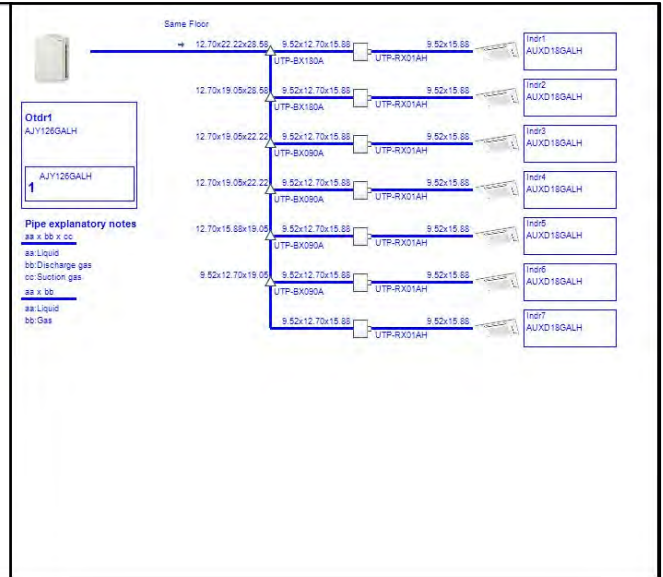
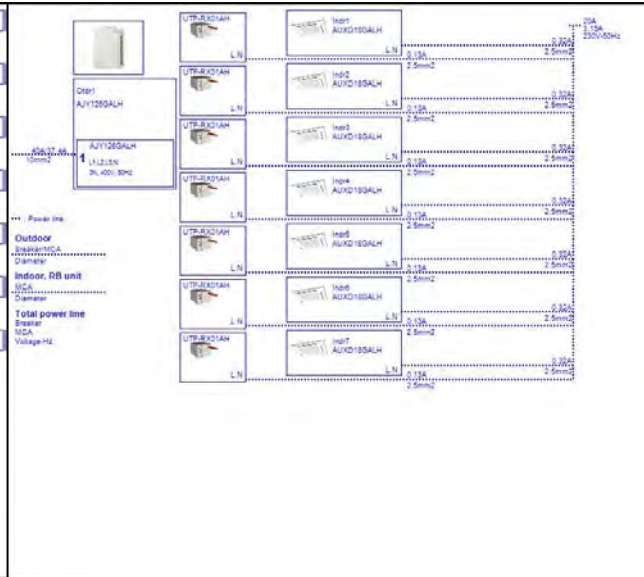
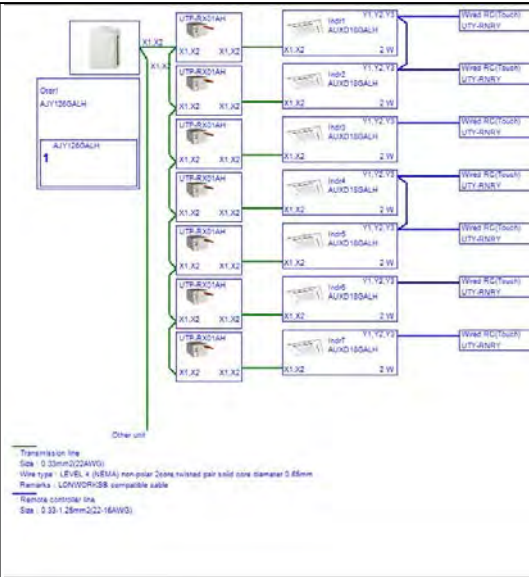
9.Room list

Room Name	Capacity	Remarks
1.000000	1.000000	1.000000
2.000000	7.000000	2.000000
3.000000	1.000000	3.000000
4.000000	2.000000	4.000000
5.000000	2.000000	5.000000
6.000000	2.000000	6.000000

Piping Diagrams

Wiring Diagrams (Transmission line)

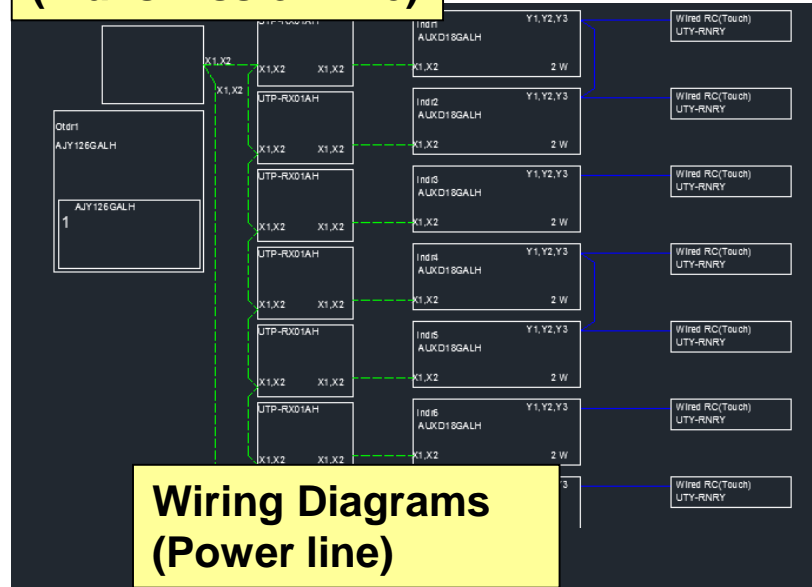
Wiring Diagrams (Power line)



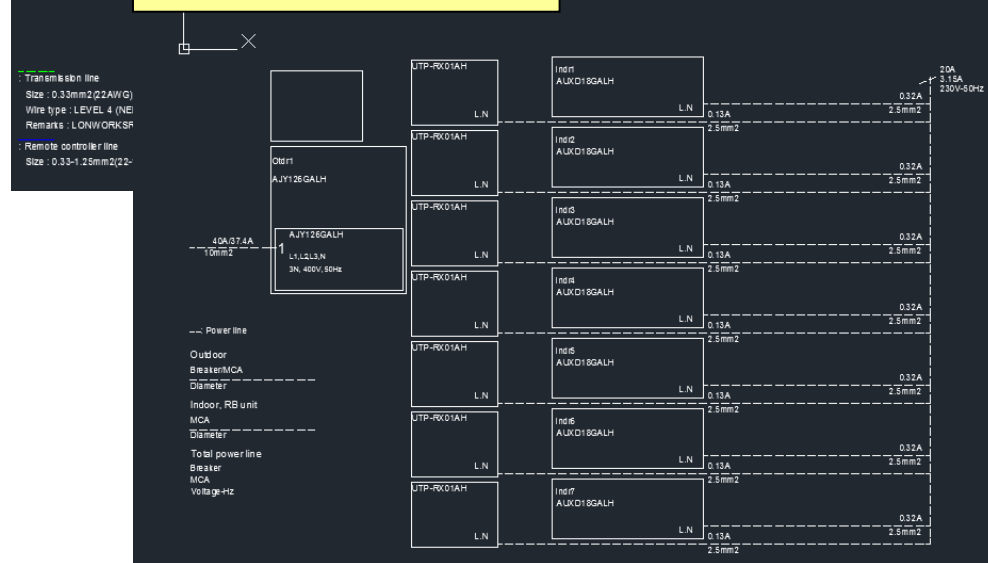
Piping Diagrams



Wiring Diagrams (Transmission line)



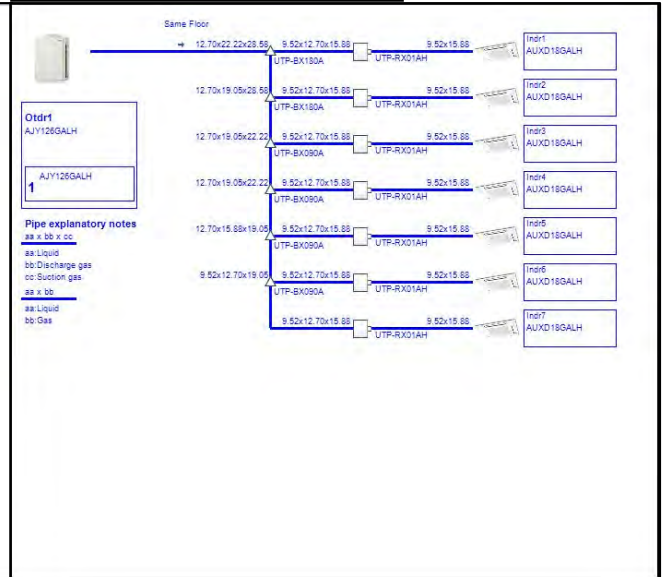
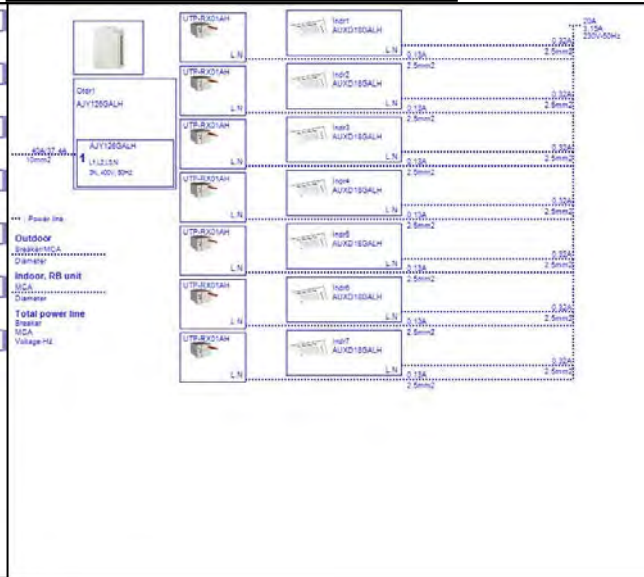
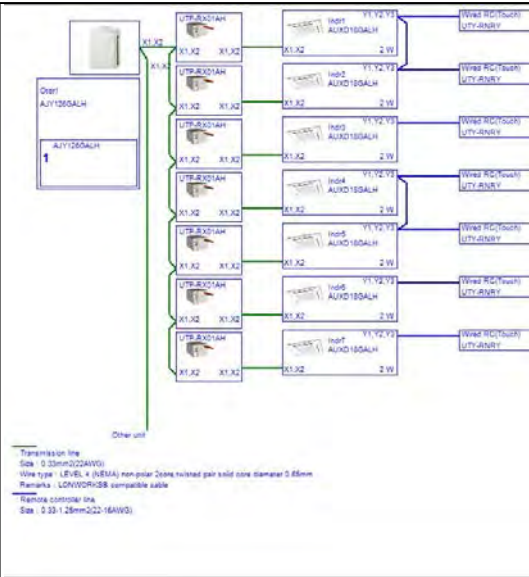
Wiring Diagrams (Power line)



Piping Diagrams

Wiring Diagrams (Transmission line)

Wiring Diagrams (Power line)



Installation Output



Output District : Europe

File Preference Tool Help Update Download DXF

Select output Item

- Detail
- Material list
- Indoor unit details
- Outdoor unit details
- Piping Diagrams
- Wiring Diagrams
- Options
- Piping / Branch kit / Header details
- User option
- Room list

Series

VRF system 8RM Multi System Single

DXF

Indoor Unit / Outdoor unit CAD data

2D(DXF)

3D(RFA)

CAD data

Output ControlDesign output Menu

Select Installation Output

Move to Output of Control Design



Detail Design

Control Design (trial)

file District : Europe

Select output Item

- Address list
- Wiring
 - Wiring Transmission and Power line
 - Switch detail
 - 8 Rooms Multi & Multi series with Central Remote Controller

Each Power

Series

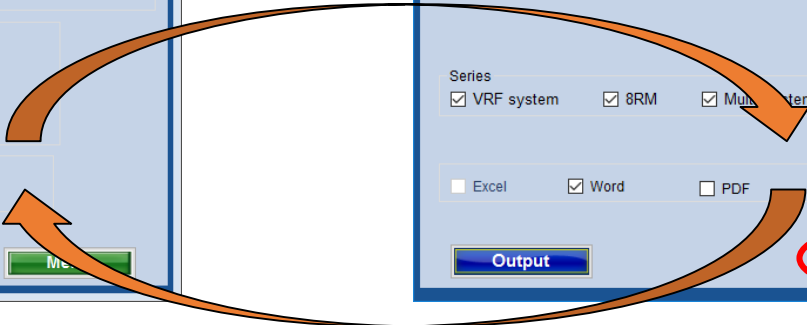
VRF system 8RM Multi System

Excel Word PDF DXF

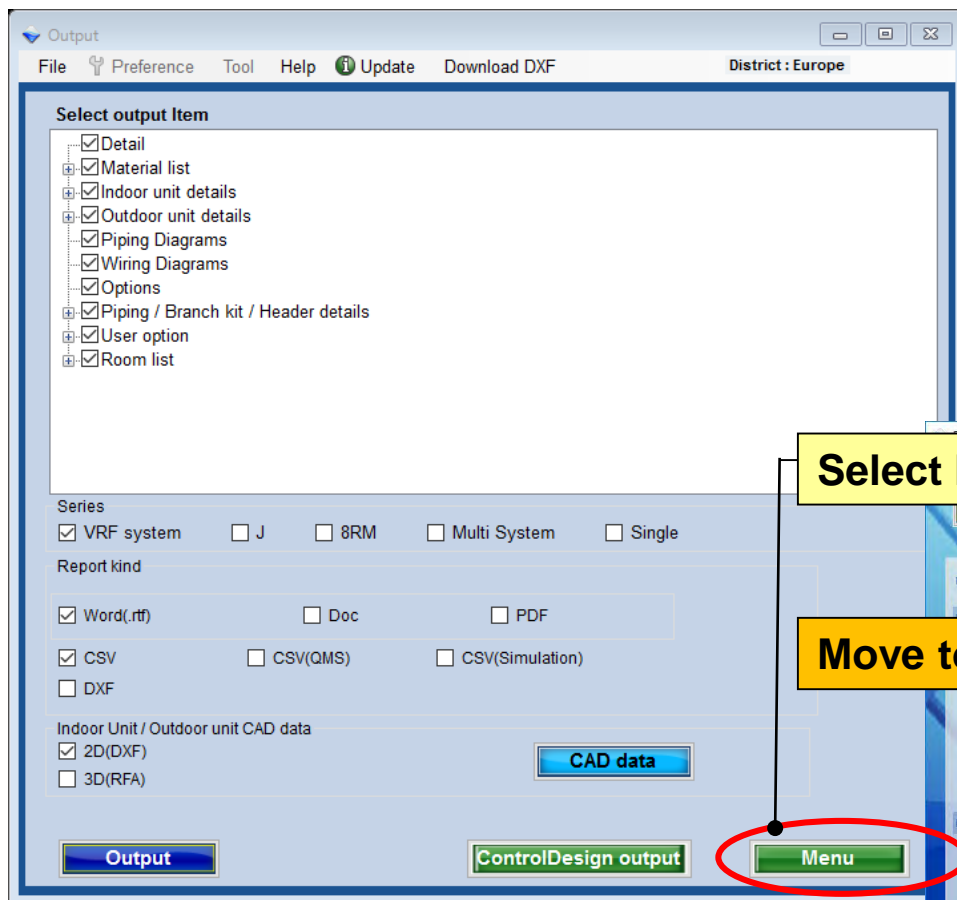
Output DS Output Menu

Select DS Output

Move to Output of Design Simulator

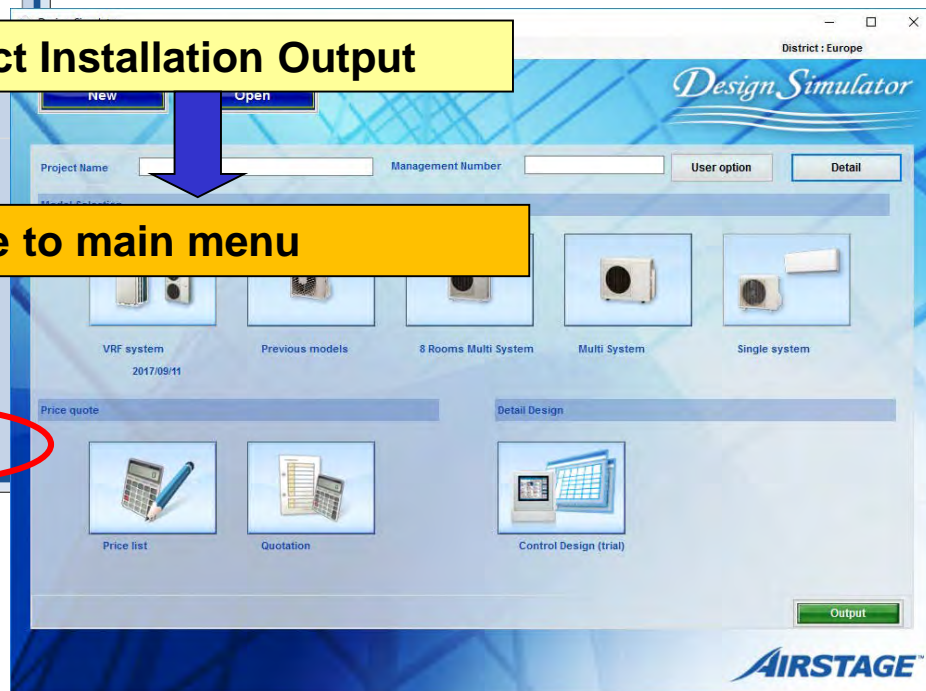


Menu



Select Installation Output

Move to main menu



CAD date (1/2)

Select Indoor Unit/Outdoor unit CAD date

Select CAD kind · Series

Select Creation date

Open CAD date

Select Check all
All items of Output list can be checked

Select Output list
Only selected CAD can be output

Output **ControlDesign output** **Menu**

Output **Cancel**

Output	Series	Unit	Type	Model	File	Creation date
<input type="checkbox"/>	ML	Indoor				
<input type="checkbox"/>	ML	Indoor				
<input type="checkbox"/>	ML	Indoor				
<input type="checkbox"/>	ML	Indoor				
<input type="checkbox"/>	ML	Indoor				
<input type="checkbox"/>	ML	Indoor				
<input type="checkbox"/>	ML	Indoor				
<input type="checkbox"/>	ML	Indoor				
<input type="checkbox"/>	ML	Indoor				
<input type="checkbox"/>	ML	Indoor				
<input type="checkbox"/>	ML	Indoor	Compact cassette	AUYG12LVLB	M_AUYG07-18LVLA.ZIP	2017/03/31
<input type="checkbox"/>	ML	Indoor	Compact cassette	AUYG14LVLB	M_AUYG07-18LVLA.ZIP	2017/03/31
<input type="checkbox"/>	ML	Indoor	Compact cassette	AUYG18LVLB	M_AUYG07-18LVLA.ZIP	2017/03/31
<input type="checkbox"/>	ML	Indoor	Compact Cassette(1Phase Triple)	AUYG18LVLB	SM_AUYG18LVLB.ZIP	2017/03/31
<input type="checkbox"/>	ML	Indoor	Compact Cassette(1Phase Twin)	AUYG18LVLB	SM_AUYG18LVLB.ZIP	2017/03/31
<input type="checkbox"/>	ML	Indoor	Compact Cassette(1Phase Twin)	AUYG22LVLA	SM_AUYG22LVLA.ZIP	2017/03/31
<input type="checkbox"/>	ML	Indoor	Compact Cassette(1Phase Twin)	AUYG24LVLA	SM_AUYG24LVLA.ZIP	2017/08/31
<input type="checkbox"/>	ML	Indoor	Compact Cassette(3 Phase Dou...	AUYG18LVLB	SM_AUYG18LVLB.ZIP	2017/03/31
<input type="checkbox"/>	ML	Indoor	Compact Cassette(3 Phase Dou...	AUYG22LVLA	SM_AUYG22LVLA.ZIP	2017/03/31
<input type="checkbox"/>	ML	Indoor	Compact Cassette(3 Phase Twin)	AUYG18LVLB	SM_AUYG18LVLB.ZIP	2017/03/31
<input type="checkbox"/>	ML	Indoor	Compact Cassette(3 Phase Twin)	AUYG22LVLA	SM_AUYG22LVLA.ZIP	2017/03/31
<input type="checkbox"/>	ML	Indoor	Compact Cassette(3 Phase Twin)	AUYG24LVLA	SM_AUYG24LVLA.ZIP	2017/08/31

CAD data (2/2)

CAD data dialog box showing a list of units. The 'Output' column has checkboxes for each unit. A red box highlights the 'Output' column. A yellow callout box points to the 'Output' column with the text 'Select Output list • check all'. A blue arrow points to the 'Output' column with the text 'Selected CAD can be saved'. A red circle highlights the 'Output' button at the bottom of the dialog box.

Output	Series	Unit	Type	Model	File	Creation date
<input checked="" type="checkbox"/>	FM	Indoor	Compact cassette	AUYG09LVLA	8RM_AUYG07-18LVLA.Z...	2017/03/31
<input checked="" type="checkbox"/>	FM	Indoor	Compact cassette	AUYG12LVLB	8RM_AUYG07-18LVLB...	2017/03/31
<input checked="" type="checkbox"/>	FM	Indoor	Compact cassette			
<input type="checkbox"/>	FM	Indoor	Compact cassette			
<input type="checkbox"/>	FM	Indoor	Floor			
<input type="checkbox"/>	FM	Indoor	Floor	AGYG12LVCA	8RM_AGYG09-...	2017/03/31
<input type="checkbox"/>	FM	Indoor	Floor	AGYG14LVCA	8RM_AGYG09-...	2017/03/31
<input type="checkbox"/>	FM	Indoor	Floor/ceiling	ABYG14LVTA	8RM_ABYG14-...	2017/03/31
<input type="checkbox"/>	FM	Indoor	Floor/ceiling	ABYG18LVTB	8RM_ABYG14-...	2017/03/31
<input type="checkbox"/>	FM	Indoor	Slim duct(Drain pump internal)	ARYG07LLTA	8RM_ARYG07-...	2017/03/31
<input type="checkbox"/>	FM	Indoor	Slim duct(Drain pump			
<input type="checkbox"/>	FM	Indoor	Slim duct(Drain pump			
<input type="checkbox"/>	FM	Indoor	Slim duct(Drain pump			
<input type="checkbox"/>	FM	Indoor	Slim duct(Drain pump internal)	ARYG18LLTB	8RM_ARYG18LLTB.ZIP	2017/03/31
<input type="checkbox"/>	FM	Indoor	Wall mounted	ASYG07LJCA	8RM_ASYG07-12LJCA...	2017/03/31
<input type="checkbox"/>	FM	Indoor	Wall mounted	ASYG09LJCA	8RM_ASYG07-12LJCA...	2017/03/31
<input type="checkbox"/>	FM	Indoor	Wall mounted	ASYG12LJCA	8RM_ASYG07-12LJCA...	2017/03/31
<input type="checkbox"/>	FM	Indoor	Wall mounted	ASYG18LFCA	8RM_ASYG18-24LFCA...	2017/03/31
<input type="checkbox"/>	FM	Indoor	Wall mounted	ASYG24LFCC	8RM_ASYG18-24LFCA...	2017/03/31
<input type="checkbox"/>	FM	Indoor	Wall mounted(LM)			
<input type="checkbox"/>	FM	Indoor	Wall mounted(LM)			
<input type="checkbox"/>	FM	Indoor	Wall mounted(Slim)			
<input type="checkbox"/>	FM	Indoor	Wall mounted(Slim)			
<input type="checkbox"/>	FM	Indoor	Wall mounted(Slim)			
<input type="checkbox"/>	FM	Indoor	Wall mounted(Slim)			

Select Output list • check all

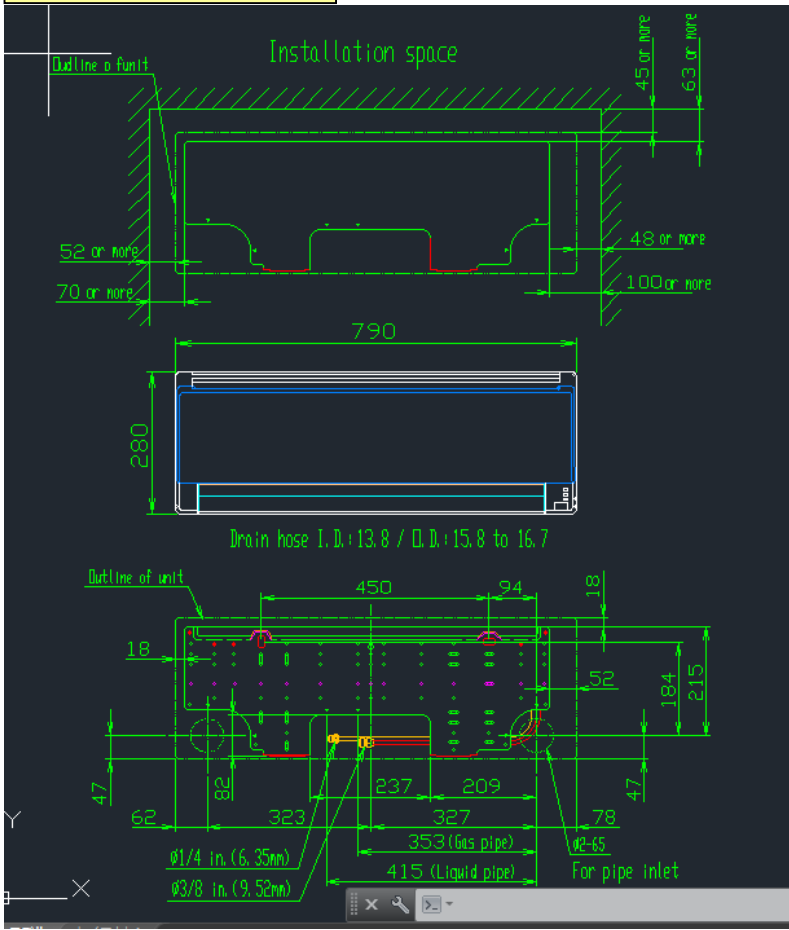
Selected CAD can be saved

Browse For Folder dialog box. The title bar says 'Browse For Folder'. The main text says 'Please select the output folder.' The file explorer shows the following structure:

- Desktop
- My Documents
- My Computer
- 3 1/2 Floppy (A:)
- Local Disk (C:)
- DVD-RAM Drive (D:)
- Control Panel
- Shared Documents
- AEL's Documents
- My Network Places

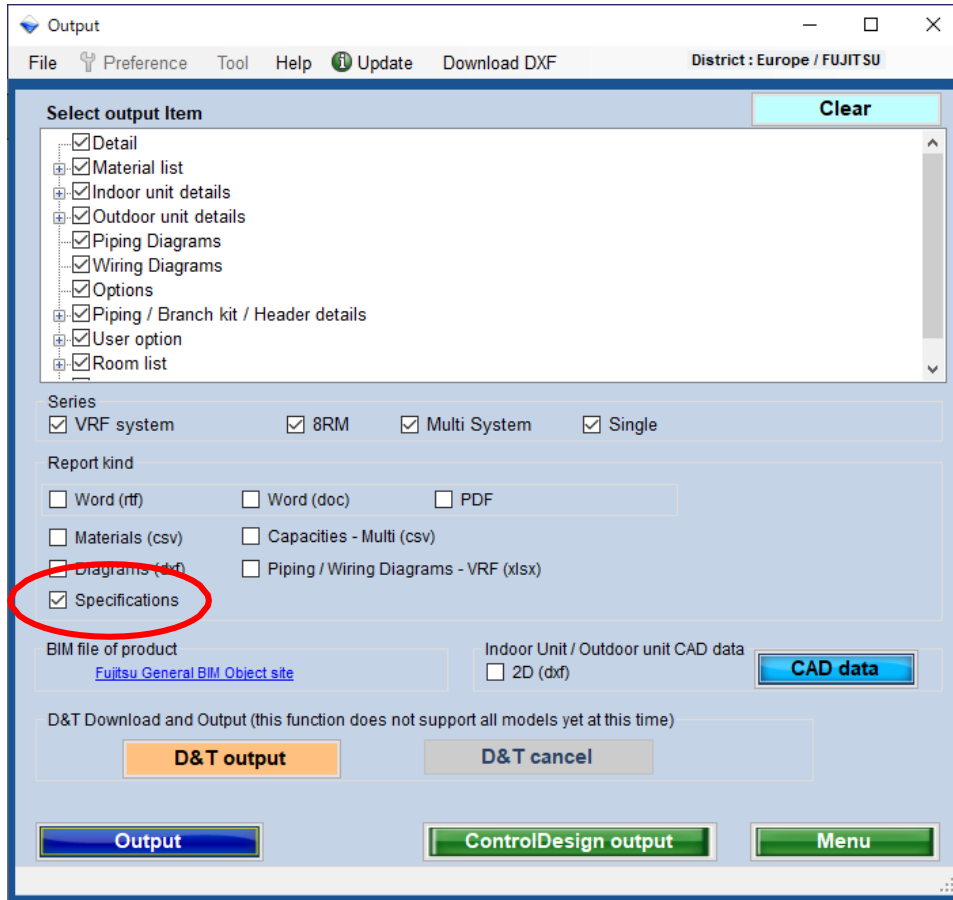
Buttons at the bottom: Make New Folder, OK, Cancel.

CAD File



Specifications

Output a specifications document file automatically combined ones of selected models.



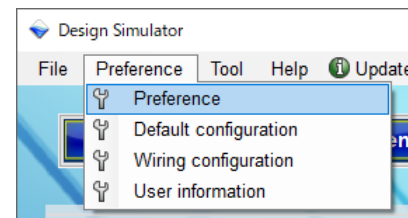
Output



One file for a project

[setting]

Source folder containing document files for models is specified in Preference at Menu.



Specs



[note]

Specification document file for each model have to be prepared.